



Wiring trunking

Precise measurements and tested quality

Precise measurements and tested quality

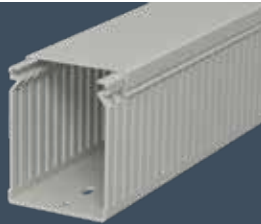


An exceptionally large range of products in the usual high quality: OBO wiring trunking ensures tidy wiring in switchgear cabinets. All the trunking is made from lead-free material. And, for optimum safety, a selection of halogen-free trunking is available from our range.

For professional wiring installations, wiring trunking in dimensions between 15 x 15 mm and 100 x 100 mm is available. A soft, burr-free slot and rounded tabs make the installation easier and also prevent injuries. Upon request, we can also offer special designs.

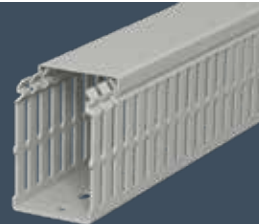
The LK4 and LK4/N as well as the LKV and LKV/N trunking systems have exactly pre-terminated points for easy breaking-out of the side retainers. Depending on their size, all types have single or dual-track perforation to their base. Tapering in the side slots of the LK4/N and LKV/N types prevents the cables from falling out.

LK4 and LK4/N



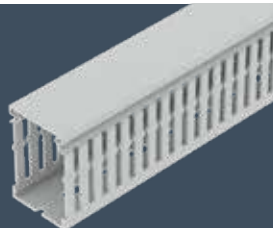
With the LK4 and LK4/N system, OBO can offer classic wiring trunking with 21 established metric dimensions from 15 x 15 mm to 80 x 120 mm. Precise processing enables simple attaching and detaching of the cover while, at the same time, ensuring a firm fit.

LKV and LKV/N



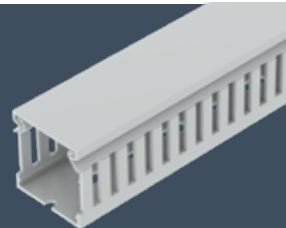
The LKV and LKV/N system is termed a "DIN trunking", as its dimensions correspond to the old DIN standard 43659. Seventeen different dimensions from 25 x 25 mm to 100 x 100 mm are available.

LK4H



The LK4H wiring trunking is also available as a halogen-free version. The halogen-free version is available in dimensions from 30 x 30 mm to 100 x 100 mm and can fulfil any size requirements.

LKV/H



The LKV/H wiring trunking is halogen-free and available in eight different sizes from 50 x 37.5 mm to 75 x 125 mm.

**HALOGEN
FREE**

- Low toxicity of smoke gases
- Scarcely any release of corrosive gases

Certified

The wiring trunking is VDE-tested and UL-listed (UL File E301798).

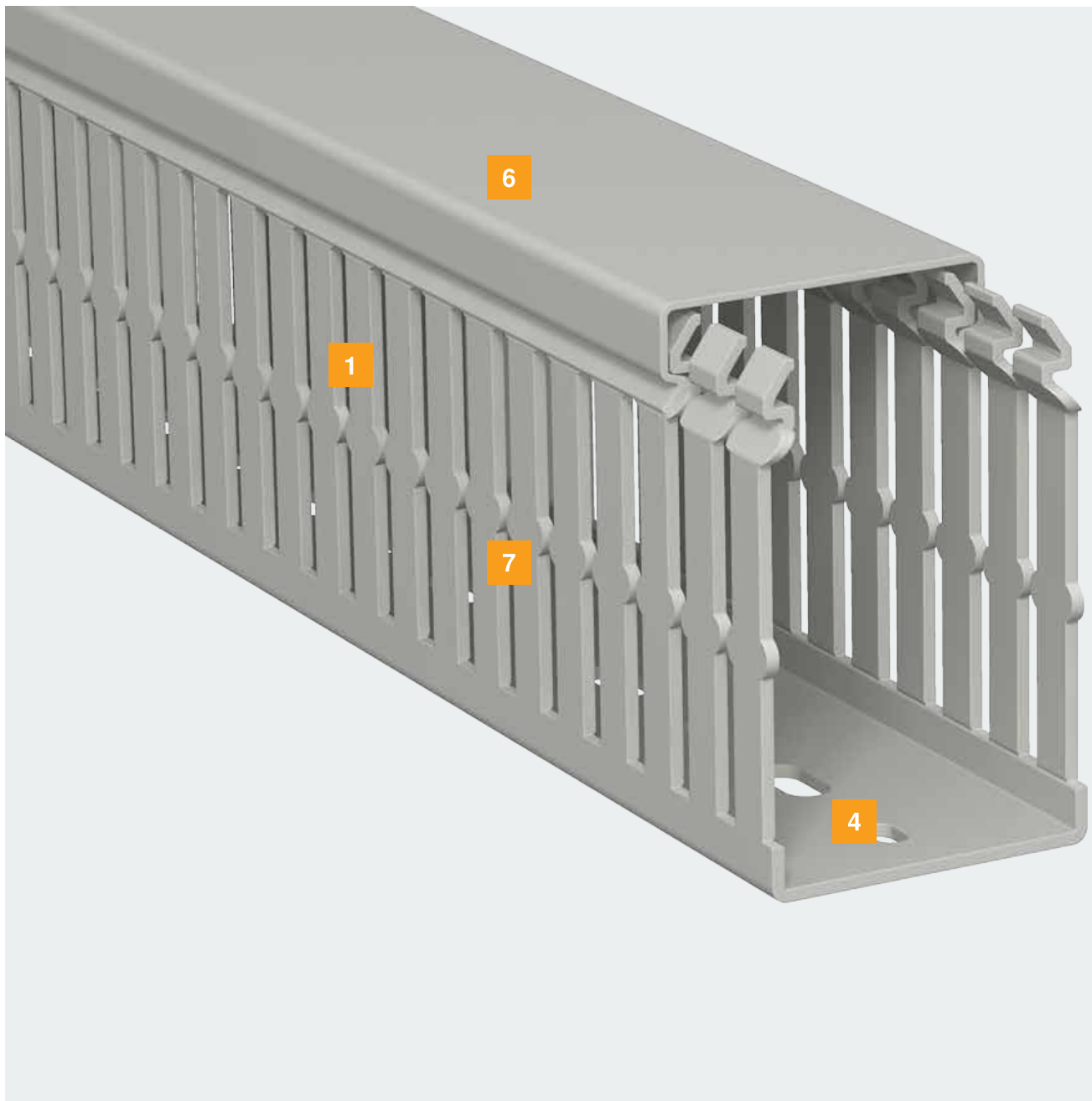


Wiring trunking mounting system

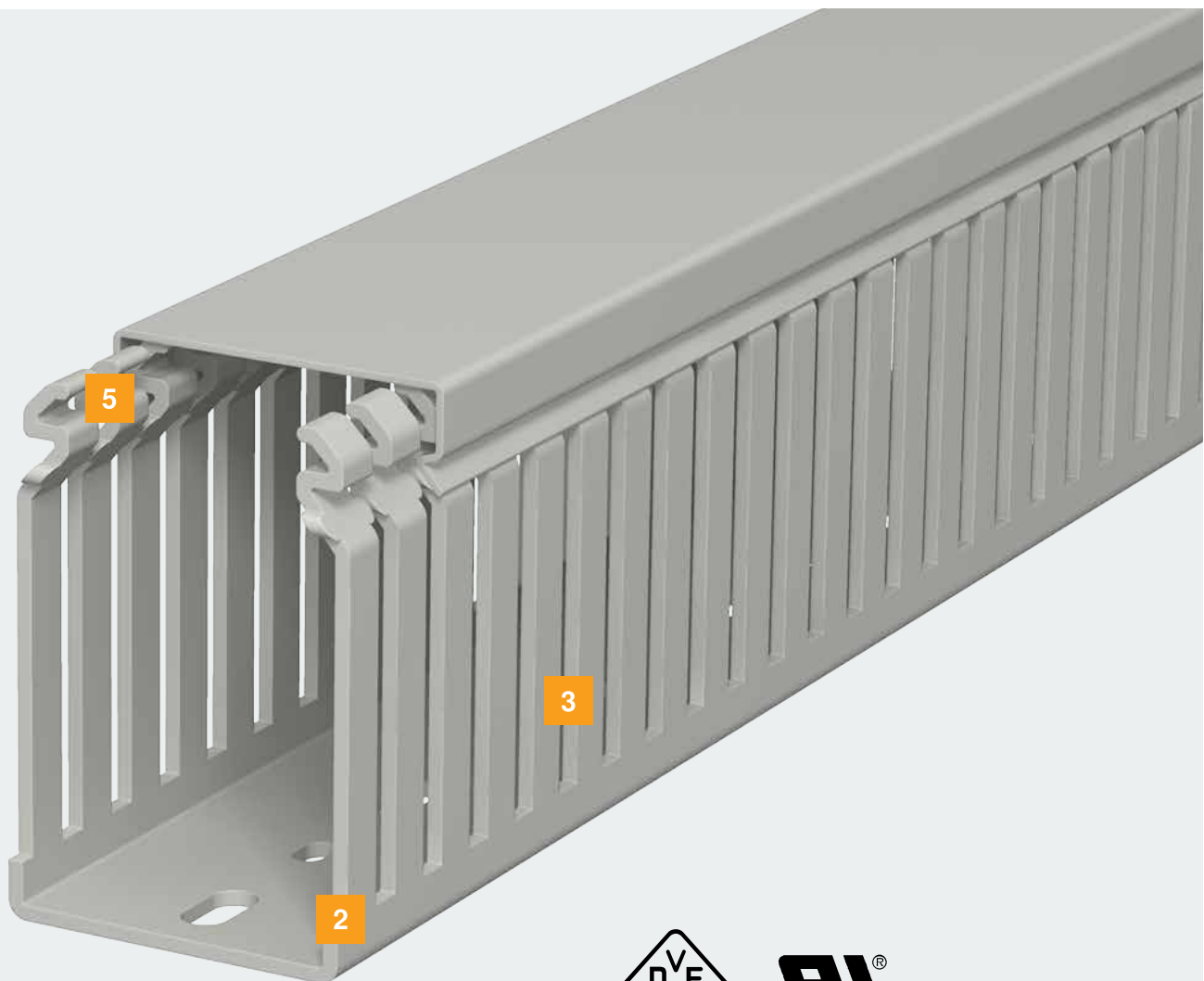
OBO wiring trunking stands out due to a wide range of benefits which have long proven their worth in switchgear cabinet construction. Even in continuous operation, it guarantees secure connections and the reliable function of the electrical infrastructure.

Special solutions

- Starting dimension of the base perforation can be adjusted variably
- Available without base perforation
- Special lengths
- Special colours



- 1 Stable trunking with high-quality thicknesses
- 2 Precisely predetermined breaking points in the strut and base area
- 3 Soft, burr-free slot, rounded tabs
- 4 Absolute dimensional accuracy of the side perforation and base perforation
- 5 Cut edges rounded and deburred in the closing area
- 6 Secure positioning of the covers through optimum closing contours
- 7 Wire retaining lug, allowing wiring without wire retaining brackets and preventing previously run-out wires from falling out



All the trunking systems correspond to the requirements of EN 50085-2-3 and are UL-listed.

LK4 and LK4/N UL File E301798

LKV, LKV/N and LKVH UL File E301798

Mounting benefits





Spacer mounting

The wire retainer is inserted into the side slot of the wiring trunking. This simplifies cable installation and keeps the cables in place in the wiring trunking. It also guarantees easy attachment of the cover. If installations are required at a later date, when the cover is removed the cables are held in the trunking and do not fall out.



Wire retainers

The wire retainers can be adjusted according to the trunking width. To do this, simply break off the wire retainer at the predetermined breaking points. This means that just one wire retainer is necessary for any trunking width.



Base perforation

Single and dual-track floor holes to DIN 43659 enable precise work.

Special solution

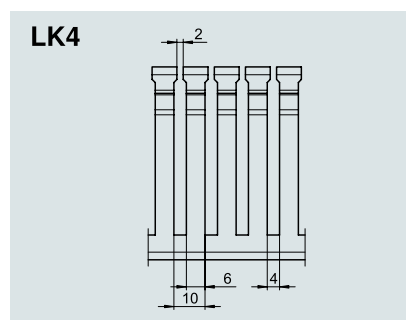
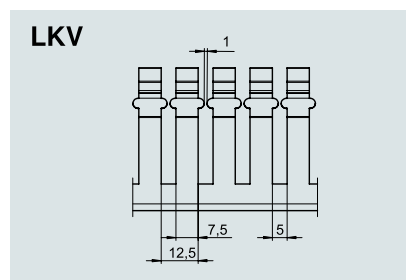
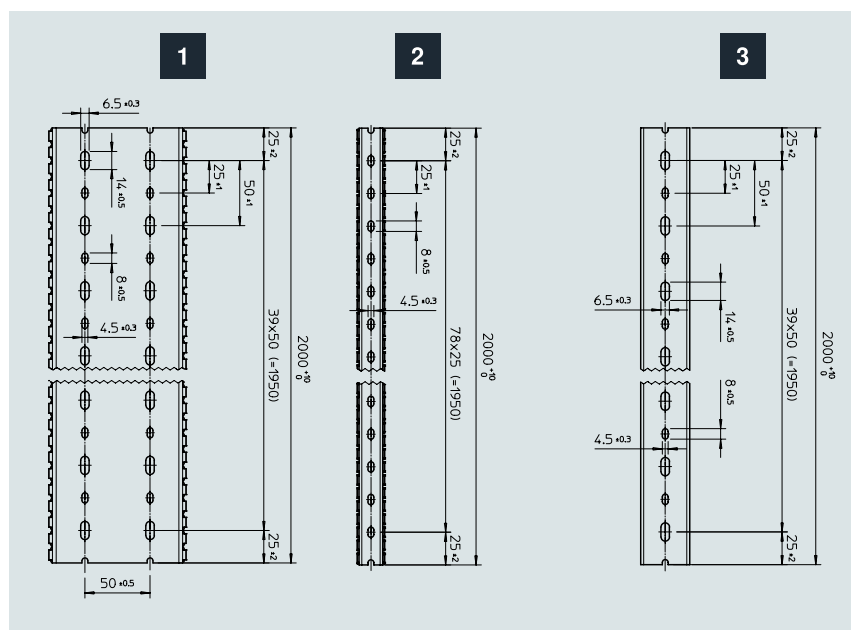
The starting dimension of the base perforation can be adjusted variably, if requested by the customer.



Identification plate

A sticker as an identification plate to attach onto wiring trunking in switchgear cabinets with self-protected power circuits.

Hole patterns and dimensions



VK and VKH wiring trunking always starts and finishes – with regards to one delivery length (2,000 mm) – with half a small fastening hole (4.5 x 8 mm).

LK4/LK4/N	Item no.	Hole pattern
LK4 15015	6178001	2
LK4 30015	6178003	2
LK4 30025	6178005	3
LK4 40025	6178010	3
LK4 40040	6178012	3
LK4 40060	6178014	3
LK4 40080	6178016	1
LK4 40100	6178018	1
LK4 60015	6178026	2
LK4/N 60015	6178201	2
LK4 60025	6178028	3
LK4/N 60025	6178203	3
LK4 60040	6178031	3
LK4/N 6004	6178205	3
LK4 60060	6178033	3
LK4/N 60060	6178207	3
LK4 60080	6178035	1
LK4/N 60080	6178209	1
LK4 60100	6178037	1
LK4/N 60100	6178211	1
LK4 60120	6178039	1
LK4/N 60120	6178213	1

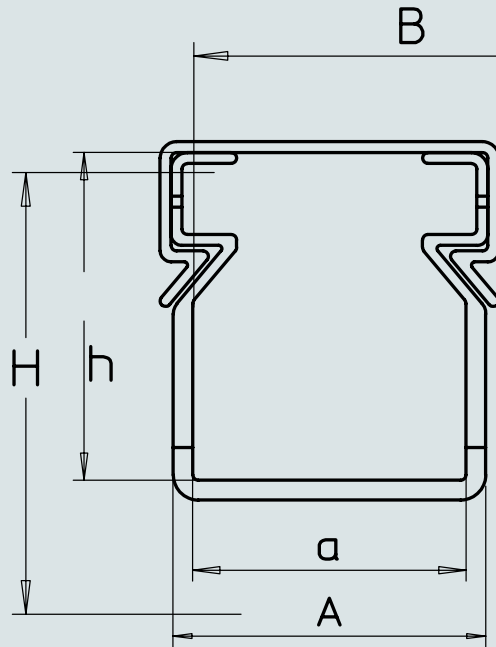
LK4/LK4/N	Item no.	Hole pattern
LK4 80025	6178050	3
LK4/N 80025	6178225	3
LK4 80040	6178052	3
LK4/N 80040	6178227	3
LK4 80060	6178054	3
LK4/N 80060	6178229	3
LK4 80080	6178056	1
LK4/N 80080	6178231	1
LK4 80100	6178059	1
LK4/N 80100	6178233	1
LK4/N 80120	6178236	1
LK4/N 80120	6178236	1

LKV/H	Item no.	Hole pattern
LKVH 50037	6178582	3
LKVH 50050	6178585	3
LKVH 50075	6178588	1
LKVH N 75037	6178552	3
LKVH N 75050	6178556	3
LKVH N 75075	6178559	1
LKVH N 75100	6178563	1
LKVH N 75125	6178566	1

LK4/LK4/N	Item no.	Hole pattern
LKV 25025	6178302	3
LKV 37025	6178305	3
LKV 37037	6178307	3
LKV 50025	6178310	3
LKV 50037	6178312	3
LKV 50050	6178314	3
LKV 50075	6178316	1

LK4/LK4/N	Item no.	Hole pattern
LKV 75025	6178320	3
LKV/N 7502	6178420	3
LKV 75037	6178322	3
LKV 75037	6178422	3
LKV 75050	6178324	3
LKV/N 75050	6178424	3
LKV 75075	6178326	1
LKV/N 75075	6178426	1
LKV 75100	6178328	1
LKV/N 75100	6178428	1
LKV 75125	6178330	1
LKV/N 75125	6178430	1
LKV 10037	6178334	3
LKV/N 10037	6178435	3
LKV 10050	6178336	3
LKV/N 10050	6178437	3
LKV 10075	6178338	1
LKV/N 10075	6178439	1
LKV 100100	6178341	1

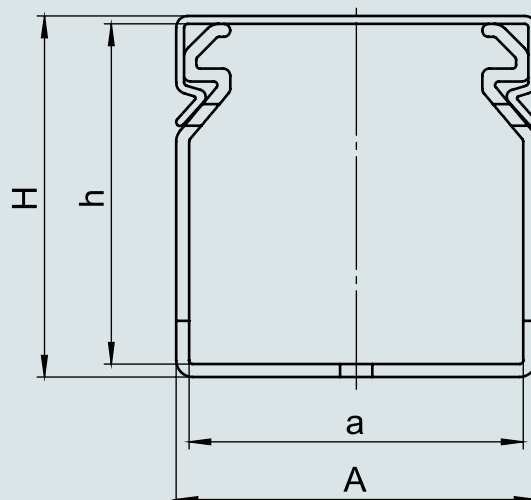
Dimensions, LK4 wiring trunking



LK4 nominal dimension = internal dimension

Item no.	Type	Item no.	Type	Dimension a mm	Dimension A mm	Dimension B mm	Dimension h mm	Dimension H mm
6178001	LK4 15015			15	17	20	15	17
6178003	LK4 30015			15	17.8	20	30	32.4
6178005	LK4 30025			25	28.6	31	30	32.8
6178010	LK4 40025			25	28.6	31	40	42.8
617801	LK4 40040			40	43.6	46.2	40	43
6178014	LK4 40060			60	64	66.4	40	43.2
6178016	LK4 40080			80	84	87	40	43.5
6178018	LK4 40100			100	104	107.4	40	43.7
6178026	LK4 60015	6178201	LK4 N 60015	15	18.6	20	60	62.8
6178028	LK4 60025	6178203	LK4 N 60025	25	29	31	60	63
6178031	LK4 60040	6178205	LK4 N 60040	40	44	46.2	60	63
6178033	LK4 60060	6178207	LK4 N 60060	60	64	66.4	60	63.2
6178035	LK4 60080	6178209	LK4 N 60080	80	84.4	87	60	63.7
6178037	LK4 60100	6178211	LK4 N 60100	100	104.6	107.4	60	64
6178039	LK4 60120	6178213	LK4 N 60120	120	124.6	127.8	60	64.2
6178050	LK4 80025	6178225	LK4 N 80025	25	29.4	31	80	83.2
6178052	LK4 80040	6178227	LK4 N 80040	40	44.4	46.2	80	83.3
6178054	LK4 80060	6178229	LK4 N 80060	60	64.4	66.4	80	83.4
6178056	LK4 80080	6178231	LK4 N 80080	80	84.6	87	80	83.9
6178059	LK4 80100	6178233	LK4 N 80100	100	104.8	107.4	80	84.1
6178061	LK4 80120	6178236	LK4 N 80120	120	124.8	127.8	80	84.3

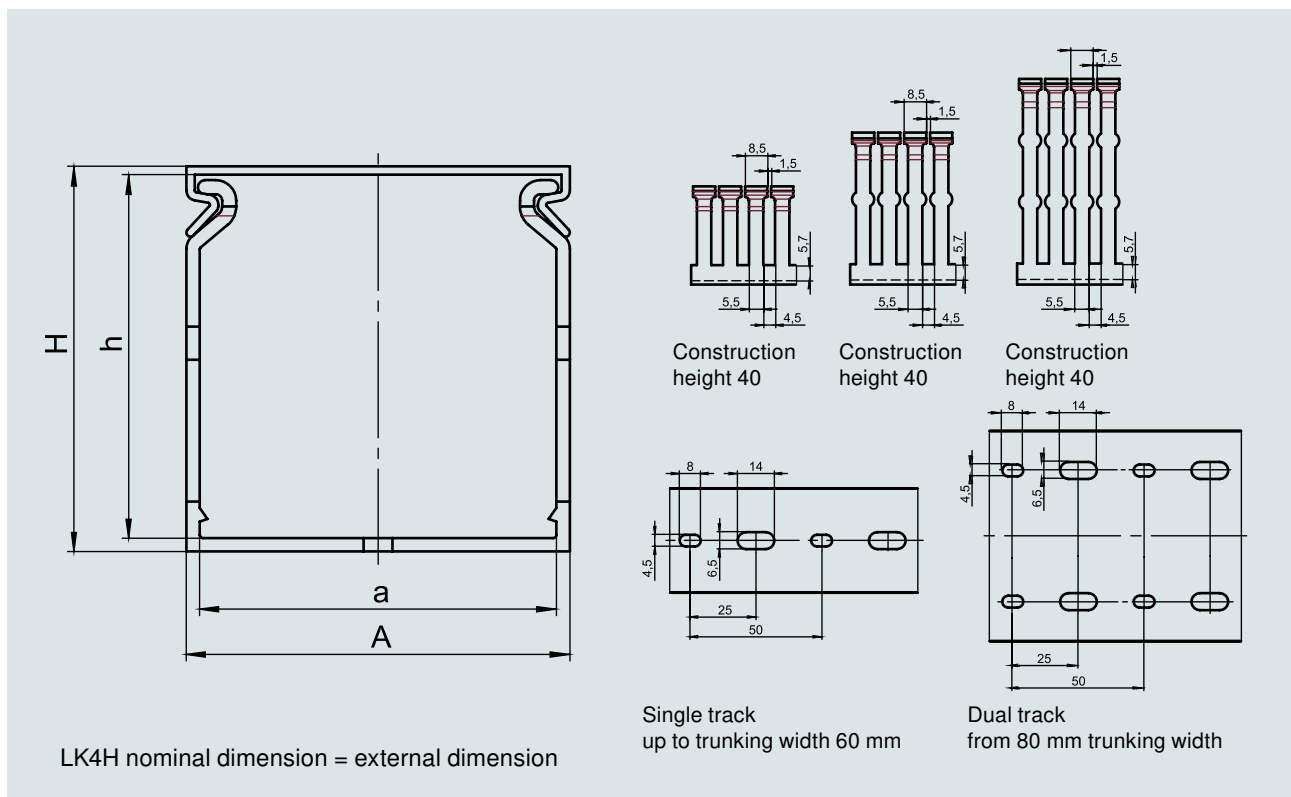
Dimensions, LKV wiring trunking



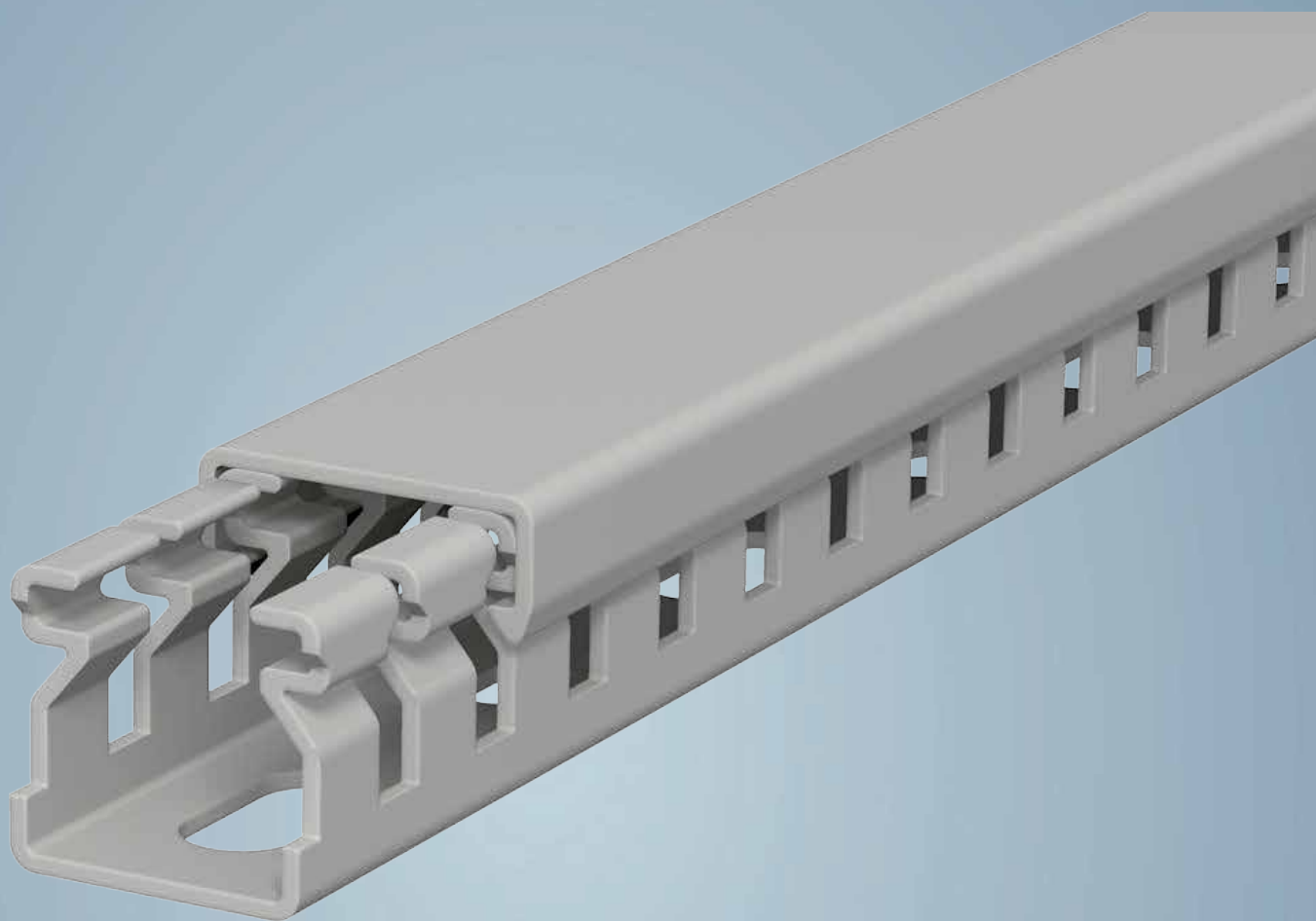
LKV LKVH nominal dimension = external dimension

Item no.	Type	Item no.	Type	Dimension a mm	Dimension A mm	Dimension h mm	Dimension H mm
6178302	LKV 25025			21.4	25.0	22.2	25.0
6178305	LKV 37025			21.4	25.0	34.7	37.5
6178307	LKV 37037			33.9	37.5	34.7	37.5
6178310	LKV 50025			21.4	25.0	47.2	50.0
6178312	LKV 50037			33.9	37.5	47.2	50.0
6178314	LKV 50050			46.4	50.0	47.3	50.1
6178316	LKV 50075			71.0	75.0	47.2	50.6
6178320	LKV 75025	6178420	LKV N 75025	21.0	25.0	71.4	74.4
6178322	LKV 75037	6178422	LKV N 75037	33.3	37.5	71.4	74.5
6178324	LKV 75050	6178424	LKV N 75050	45.6	50.0	71.4	74.7
6178326	LKV 75075	6178426	LKV N 75075	70.6	75.0	71.4	75.0
6178328	LKV 75100	6178428	LKV N 75100	95.2	100.0	71.4	75.5
6178330	LKV 75125	6178430	LKV N 75125	120.2	125.0	71.4	75.6
6178334	LKV 10037	6178435	LKV N 10037	33.1	37.5	96.2	99.4
6178336	LKV 10050	6178437	LKV N 10050	45.6	50.0	96.2	99.5
6178338	LKV 10075	6178439	LKV N 10075	70.2	75.0	96.2	100.0
6178341	LKV 100100	6178441	LKV N 100100	95.2	100.0	96.2	100.3

Dimensions, LKV wiring trunking



Item no.	Type	Dimension a mm	Dimension A mm	Dimension h mm	Dimension H mm
6132540	LK4H 30030	26.6	30.0	27.5	30.4
6132544	LK4H 40025	21.6	25.0	37.6	40.5
6132546	LK4H 40040	36.4	40.0	37.4	40.5
6132548	LK4H 40060	56.2	60.0	37.3	40.5
6132550	LK4H N 60025	21.2	25.0	57.5	60.6
6132552	LK4H N 60040	36.2	40.0	57.1	60.3
6132554	LK4H N 60060	55.8	60.0	56.9	60.3
6132556	LK4H N 60080	75.8	80.0	56.8	60.3
6132560	LK4H N 80025	20.8	25.0	76.7	80.0
6132562	LK4H N 80040	35.8	40.0	76.6	80.0
6132564	LK4H N 80060	55.6	60.0	76.5	80.0
6132566	LK4H N 80080	75.4	80.0	76.3	80.0
6132568	LK4H N 80100	95.4	100.0	76.2	80.0
6132569	LK4H N 80120	115.2	120.0	76.4	80.0
6132570	LK4H N 10040	35.4	40.0	96.9	100.5
6132572	LK4H N 10060	55.6	60.0	96.8	100.3
6132574	LK4H N 10080	75.4	80.0	96.6	100.3
6132576	LK4H N 100100	95.2	100.0	96.4	100.3

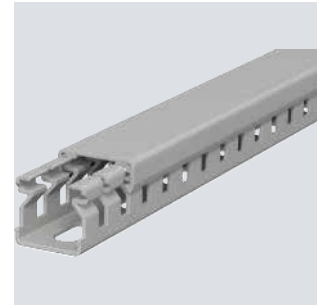
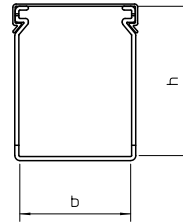


PVC

Wiring trunking, type LK4 15015

Type	Colour	Length mm	Dimension W x H mm	Min. order- ing quan- tity m	Item no.
LK4 15015	Stone grey	2000	15x15	2	6178001

Wiring duct, incl. cover and base perforation, for horizontal and vertical routing of electrical cables in the switchgear cabinet. Designed as a metric duct. The nominal dimension of the system size corresponds to the internal dimension of the duct. Retainers are broken out without tools. The flush-floor routing of cables is possible through predetermined break points. Tested to DIN EN 50085-2-3. Special lengths on request.

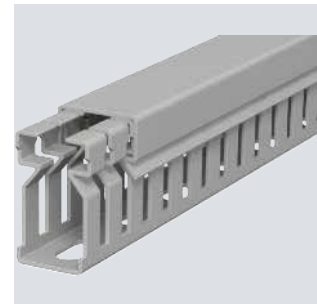
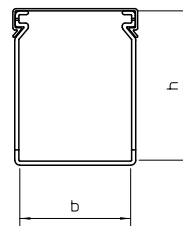


PVC

Wiring trunking, type LK4 30015

Type	Colour	Length mm	Dimension W x H mm	Min. order- ing quan- tity m	Item no.
LK4 30015	Stone grey	2000	15x30	2	6178003

Wiring duct, incl. cover and base perforation, for horizontal and vertical routing of electrical cables in the switchgear cabinet. Designed as a metric duct. The nominal dimension of the system size corresponds to the internal dimension of the duct. Retainers are broken out without tools. The flush-floor routing of cables is possible through predetermined break points. Tested to DIN EN 50085-2-3. Special lengths on request.

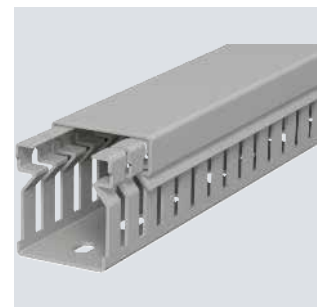
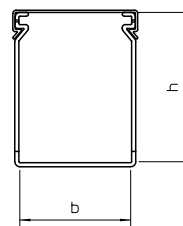


PVC

Wiring trunking, type LK4 30025

Type	Colour	Length mm	Dimension W x H mm	Min. order- ing quan- tity m	Item no.
LK4 30025	Stone grey	2000	25x30	2	6178005

Wiring duct, incl. cover and base perforation, for horizontal and vertical routing of electrical cables in the switchgear cabinet. Designed as a metric duct. The nominal dimension of the system size corresponds to the internal dimension of the duct. Retainers are broken out without tools. The flush-floor routing of cables is possible through predetermined break points. Tested to DIN EN 50085-2-3. Special lengths on request.

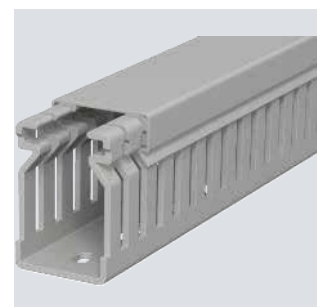
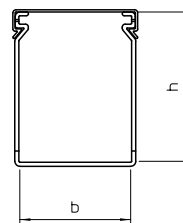


PVC

Wiring trunking, type LK4 40025

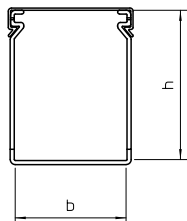
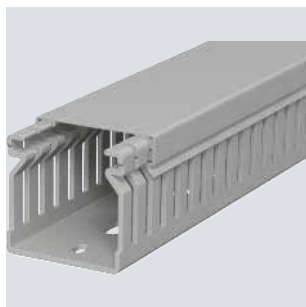
Type	Colour	Length mm	Dimension W x H mm	Min. order- ing quan- tity m	Item no.
LK4 40025	Stone grey	2000	25x40	2	6178010

Wiring duct, incl. cover and base perforation, for horizontal and vertical routing of electrical cables in the switchgear cabinet. Designed as a metric duct. The nominal dimension of the system size corresponds to the internal dimension of the duct. Retainers are broken out without tools. The flush-floor routing of cables is possible through predetermined break points. Tested to DIN EN 50085-2-3. Special lengths on request.



Wiring trunking, type LK4 40040

PVC

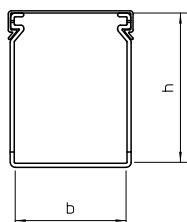
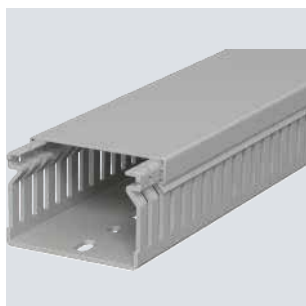


Type	Colour	Length mm	Dimension W x H mm	Min. order- ing quan- tity m	Item no.
LK4 40040	Stone grey	2000	40x40	2	6178012

Wiring duct, incl. cover and base perforation, for horizontal and vertical routing of electrical cables in the switchgear cabinet. Designed as a metric duct. The nominal dimension of the system size corresponds to the internal dimension of the duct. Retainers are broken out without tools. The flush-floor routing of cables is possible through predetermined break points. Tested to DIN EN 50085-2-3. Special lengths on request.

Wiring trunking, type LK4 40060

PVC

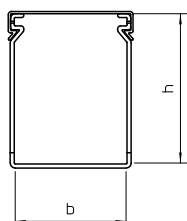
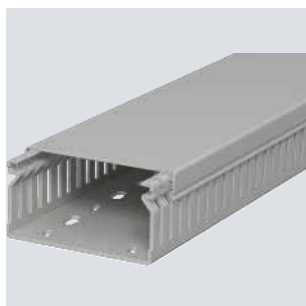


Type	Colour	Length mm	Dimension W x H mm	Min. order- ing quan- tity m	Item no.
LK4 40060	Stone grey	2000	60x40	2	6178014

Wiring duct, incl. cover and base perforation, for horizontal and vertical routing of electrical cables in the switchgear cabinet. Designed as a metric duct. The nominal dimension of the system size corresponds to the internal dimension of the duct. Retainers are broken out without tools. The flush-floor routing of cables is possible through predetermined break points. Tested to DIN EN 50085-2-3. Special lengths on request.

Wiring trunking, type LK4 40080

PVC

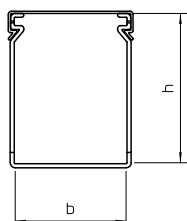
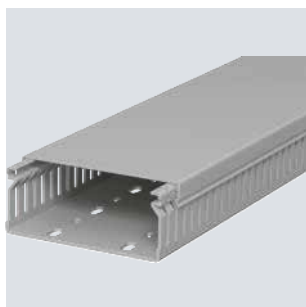


Type	Colour	Length mm	Dimension W x H mm	Min. order- ing quan- tity m	Item no.
LK4 40080	Stone grey	2000	80x40	2	6178016

Wiring duct, incl. cover and base perforation, for horizontal and vertical routing of electrical cables in the switchgear cabinet. Designed as a metric duct. The nominal dimension of the system size corresponds to the internal dimension of the duct. Retainers are broken out without tools. The flush-floor routing of cables is possible through predetermined break points. Tested to DIN EN 50085-2-3. Special lengths on request.

Wiring trunking, type LK4 40100

PVC



Type	Colour	Length mm	Dimension W x H mm	Min. order- ing quan- tity m	Item no.
LK4 40100	Stone grey	2000	100x40	2	6178018

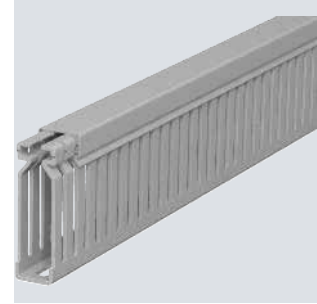
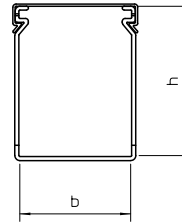
Wiring duct, incl. cover and base perforation, for horizontal and vertical routing of electrical cables in the switchgear cabinet. Designed as a metric duct. The nominal dimension of the system size corresponds to the internal dimension of the duct. Retainers are broken out without tools. The flush-floor routing of cables is possible through predetermined break points. Tested to DIN EN 50085-2-3. Special lengths on request.

PVC

Wiring trunking, type LK4 60015

Type	Colour	Length mm	Dimension W x H mm	Min. order- ing quan- tity m	Item no.
LK4 60015	Stone grey	2000	15x60	2	6178026

Wiring duct, incl. cover and base perforation, for horizontal and vertical routing of electrical cables in the switchgear cabinet. Designed as a metric duct. The nominal dimension of the system size corresponds to the internal dimension of the duct. Retainers are broken out without tools. The flush-floor routing of cables is possible through predetermined break points. Tested to DIN EN 50085-2-3. Special lengths on request.

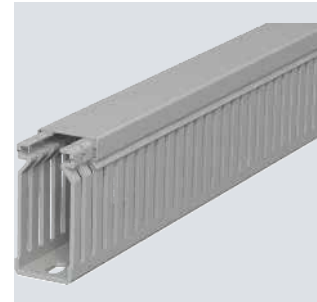
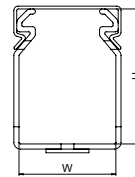


PVC

Wiring trunking, type LK4 60025

Type	Colour	Length mm	Dimension W x H mm	Min. order- ing quan- tity m	Item no.
LK4 60025	Stone grey	2000	25x60	2	6178028

Wiring duct, incl. cover and base perforation, for horizontal and vertical routing of electrical cables in the switchgear cabinet. Designed as a metric duct. The nominal dimension of the system size corresponds to the internal dimension of the duct. Retainers are broken out without tools. The flush-floor routing of cables is possible through predetermined break points. Tested to DIN EN 50085-2-3. Special lengths on request.

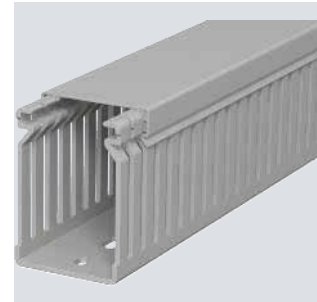
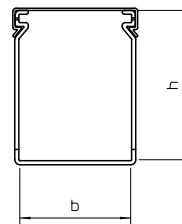


PVC

Wiring trunking, type LK4 60040

Type	Colour	Length mm	Dimension W x H mm	Min. order- ing quan- tity m	Item no.
LK4 60040	Stone grey	2000	40x60	2	6178031

Wiring duct, incl. cover and base perforation, for horizontal and vertical routing of electrical cables in the switchgear cabinet. Designed as a metric duct. The nominal dimension of the system size corresponds to the internal dimension of the duct. Retainers are broken out without tools. The flush-floor routing of cables is possible through predetermined break points. Tested to DIN EN 50085-2-3. Special lengths on request.

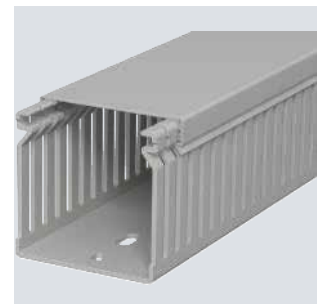
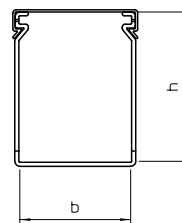


PVC

Wiring trunking, type LK4 60060

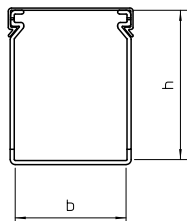
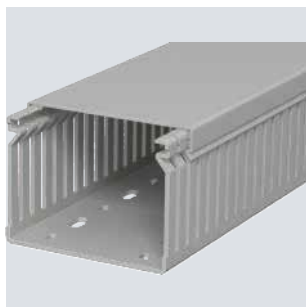
Type	Colour	Length mm	Dimension W x H mm	Min. order- ing quan- tity m	Item no.
LK4 60060	Stone grey	2000	60x60	2	6178033

Wiring duct, incl. cover and base perforation, for horizontal and vertical routing of electrical cables in the switchgear cabinet. Designed as a metric duct. The nominal dimension of the system size corresponds to the internal dimension of the duct. Retainers are broken out without tools. The flush-floor routing of cables is possible through predetermined break points. Tested to DIN EN 50085-2-3. Special lengths on request.



Wiring trunking, type LK4 60080

PVC

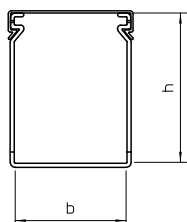
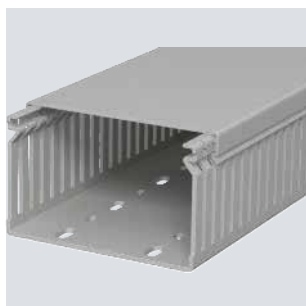


Type	Colour	Length mm	Dimension W x H mm	Min. order- ing quan- tity m	Item no.
LK4 60080	Stone grey	2000	80x60	2	6178035

Wiring duct, incl. cover and base perforation, for horizontal and vertical routing of electrical cables in the switchgear cabinet. Designed as a metric duct. The nominal dimension of the system size corresponds to the internal dimension of the duct. Retainers are broken out without tools. The flush-floor routing of cables is possible through predetermined break points. Tested to DIN EN 50085-2-3. Special lengths on request.

Wiring trunking, type LK4 60100

PVC

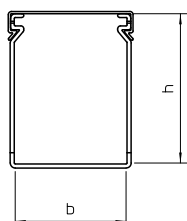
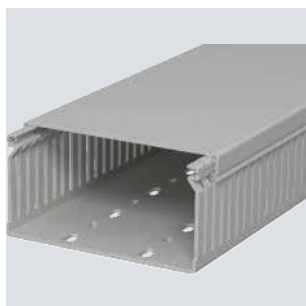


Type	Colour	Length mm	Dimension W x H mm	Min. order- ing quan- tity m	Item no.
LK4 60100	Stone grey	2000	100x60	2	6178037

Wiring duct, incl. cover and base perforation, for horizontal and vertical routing of electrical cables in the switchgear cabinet. Designed as a metric duct. The nominal dimension of the system size corresponds to the internal dimension of the duct. Retainers are broken out without tools. The flush-floor routing of cables is possible through predetermined break points. Tested to DIN EN 50085-2-3. Special lengths on request.

Wiring trunking, type LK4 60120

PVC

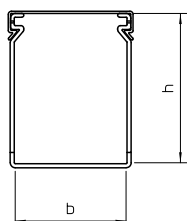
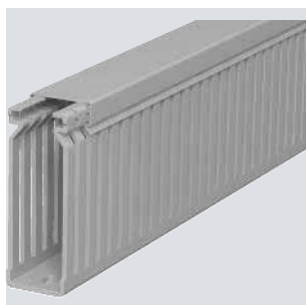


Type	Colour	Length mm	Dimension W x H mm	Min. order- ing quan- tity m	Item no.
LK4 60120	Stone grey	2000	120x60	2	6178039

Wiring duct, incl. cover and base perforation, for horizontal and vertical routing of electrical cables in the switchgear cabinet. Designed as a metric duct. The nominal dimension of the system size corresponds to the internal dimension of the duct. Retainers are broken out without tools. The flush-floor routing of cables is possible through predetermined break points. Tested to DIN EN 50085-2-3. Special lengths on request.

Wiring trunking, type LK4 80025

PVC



Type	Colour	Length mm	Dimension W x H mm	Min. order- ing quan- tity m	Item no.
LK4 80025	Stone grey	2000	25x80	2	6178050

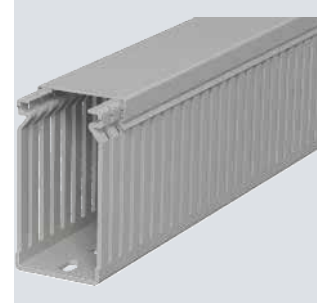
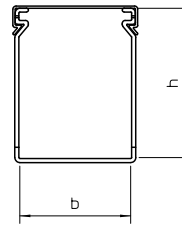
Wiring duct, incl. cover and base perforation, for horizontal and vertical routing of electrical cables in the switchgear cabinet. Designed as a metric duct. The nominal dimension of the system size corresponds to the internal dimension of the duct. Retainers are broken out without tools. The flush-floor routing of cables is possible through predetermined break points. Tested to DIN EN 50085-2-3. Special lengths on request.

PVC

Wiring trunking, type LK4 80040

Type	Colour	Length mm	Dimension W x H mm	Min. order- ing quan- tity m	Item no.
LK4 80040	Stone grey	2000	40x80	2	6178052

Wiring duct, incl. cover and base perforation, for horizontal and vertical routing of electrical cables in the switchgear cabinet. Designed as a metric duct. The nominal dimension of the system size corresponds to the internal dimension of the duct. Retainers are broken out without tools. The flush-floor routing of cables is possible through predetermined break points. Tested to DIN EN 50085-2-3. Special lengths on request.

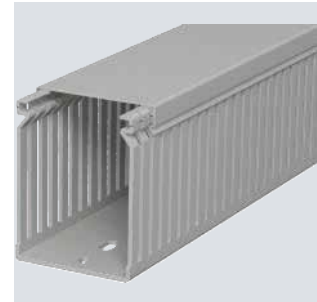
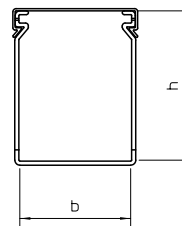


PVC

Wiring trunking, type LK4 80060

Type	Colour	Length mm	Dimension W x H mm	Min. order- ing quan- tity m	Item no.
LK4 80060	Stone grey	2000	60x80	2	6178054

Wiring duct, incl. cover and base perforation, for horizontal and vertical routing of electrical cables in the switchgear cabinet. Designed as a metric duct. The nominal dimension of the system size corresponds to the internal dimension of the duct. Retainers are broken out without tools. The flush-floor routing of cables is possible through predetermined break points. Tested to DIN EN 50085-2-3. Special lengths on request.

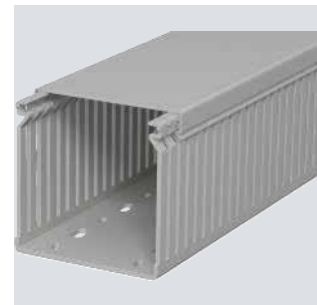
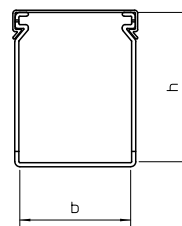


PVC

Wiring trunking, type LK4 80080

Type	Colour	Length mm	Dimension W x H mm	Min. order- ing quan- tity m	Item no.
LK4 80080	Stone grey	2000	80x80	2	6178056

Wiring duct, incl. cover and base perforation, for horizontal and vertical routing of electrical cables in the switchgear cabinet. Designed as a metric duct. The nominal dimension of the system size corresponds to the internal dimension of the duct. Retainers are broken out without tools. The flush-floor routing of cables is possible through predetermined break points. Tested to DIN EN 50085-2-3. Special lengths on request.

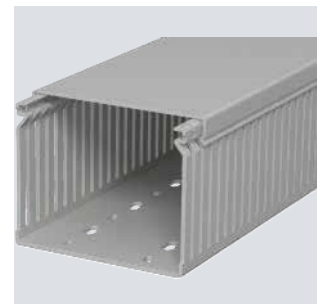
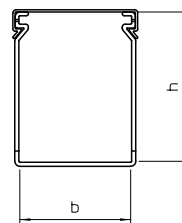


PVC

Wiring trunking, type LK4 80100

Type	Colour	Length mm	Dimension W x H mm	Min. order- ing quan- tity m	Item no.
LK4 80100	Stone grey	2000	100x80	2	6178059

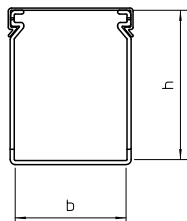
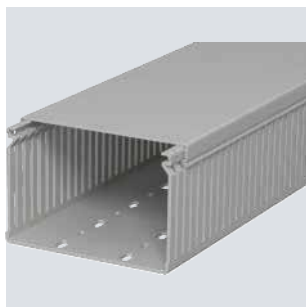
Wiring duct, incl. cover and base perforation, for horizontal and vertical routing of electrical cables in the switchgear cabinet. Designed as a metric duct. The nominal dimension of the system size corresponds to the internal dimension of the duct. Retainers are broken out without tools. The flush-floor routing of cables is possible through predetermined break points. Tested to DIN EN 50085-2-3. Special lengths on request.



LK4 wiring trunking

Wiring trunking, type LK4 80120

PVC



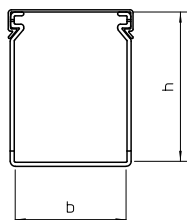
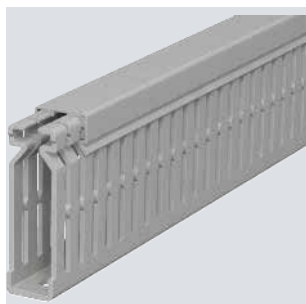
Type	Colour	Length mm	Dimension W x H mm	Min. order- ing quan- tity m	Item no.
LK4 80120	Stone grey	2000	120x80	2	6178061

Wiring duct, incl. cover and base perforation, for horizontal and vertical routing of electrical cables in the switchgear cabinet. Designed as a metric duct. The nominal dimension of the system size corresponds to the internal dimension of the duct. Retainers are broken out without tools. The flush-floor routing of cables is possible through predetermined break points. Tested to DIN EN 50085-2-3. Special lengths on request.

LK4/N wiring trunking

Wiring trunking, type LK4 N 60015

PVC

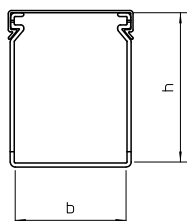
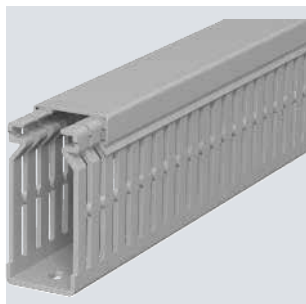


Type	Colour	Length mm	Dimension W x H mm	Min. order- ing quan- tity m	Item no.
LK4 N 60015	Stone grey	2000	15x60	2	6178201

Wiring duct, incl. cover and base perforation, for horizontal and vertical routing of electrical cables in the switchgear cabinet. Designed as a metric duct. The nominal dimension of the system size corresponds to the internal dimension of the duct. Retainers are broken out without tools. The flush-floor routing of cables is possible through predetermined break points. Tapering in the side slots prevents the cables from falling out. Tested to DIN EN 50085-2-3. Special lengths on request.

Wiring trunking, type LK4 N 60025

PVC

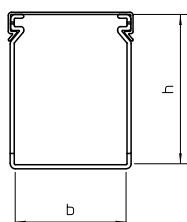
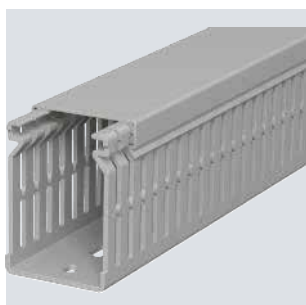


Type	Colour	Length mm	Dimension W x H mm	Min. order- ing quan- tity m	Item no.
LK4 N 60025	Stone grey	2000	25x60	2	6178203

Wiring duct, incl. cover and base perforation, for horizontal and vertical routing of electrical cables in the switchgear cabinet. Designed as a metric duct. The nominal dimension of the system size corresponds to the internal dimension of the duct. Retainers are broken out without tools. The flush-floor routing of cables is possible through predetermined break points. Tapering in the side slots prevents the cables from falling out. Tested to DIN EN 50085-2-3. Special lengths on request.

Wiring trunking, type LK4 N 60040

PVC



Type	Colour	Length mm	Dimension W x H mm	Min. order- ing quan- tity m	Item no.
LK4 N 60040	Stone grey	2000	40x60	2	6178205

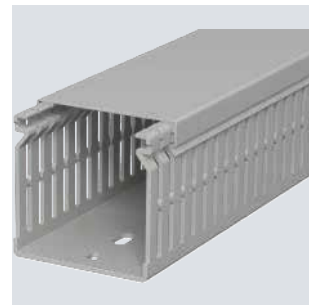
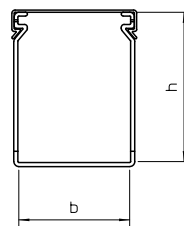
Wiring duct, incl. cover and base perforation, for horizontal and vertical routing of electrical cables in the switchgear cabinet. Designed as a metric duct. The nominal dimension of the system size corresponds to the internal dimension of the duct. Retainers are broken out without tools. The flush-floor routing of cables is possible through predetermined break points. Tapering in the side slots prevents the cables from falling out. Tested to DIN EN 50085-2-3. Special lengths on request.

PVC

Type	Colour	Length mm	Dimension W x H mm	Min. order- ing quan- tity m	Item no.
LK4 N 60060	Stone grey	2000	60x60	2	6178207

Wiring duct, incl. cover and base perforation, for horizontal and vertical routing of electrical cables in the switchgear cabinet. Designed as a metric duct. The nominal dimension of the system size corresponds to the internal dimension of the duct. Retainers are broken out without tools. The flush-floor routing of cables is possible through predetermined break points. Tapering in the side slots prevents the cables from falling out. Tested to DIN EN 50085-2-3. Special lengths on request.

Wiring trunking, type LK4 N 60060

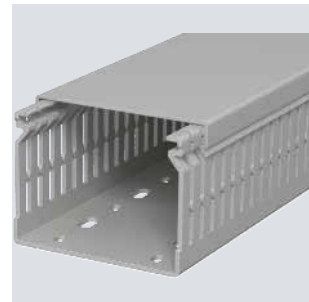
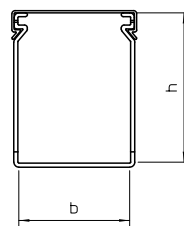


PVC

Type	Colour	Length mm	Dimension W x H mm	Min. order- ing quan- tity m	Item no.
LK4 N 60080	Stone grey	2000	80x60	2	6178209

Wiring duct, incl. cover and base perforation, for horizontal and vertical routing of electrical cables in the switchgear cabinet. Designed as a metric duct. The nominal dimension of the system size corresponds to the internal dimension of the duct. Retainers are broken out without tools. The flush-floor routing of cables is possible through predetermined break points. Tapering in the side slots prevents the cables from falling out. Tested to DIN EN 50085-2-3. Special lengths on request.

Wiring trunking, type LK4 N 60080

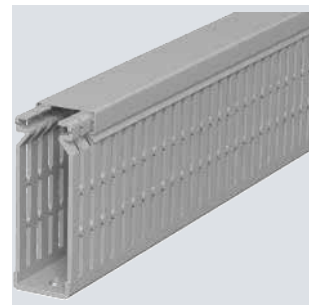
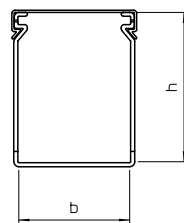


PVC

Type	Colour	Length mm	Dimension W x H mm	Min. order- ing quan- tity m	Item no.
LK4 N 80025	Stone grey	2000	25x80	2	6178225

Wiring duct, incl. cover and base perforation, for horizontal and vertical routing of electrical cables in the switchgear cabinet. Designed as a metric duct. The nominal dimension of the system size corresponds to the internal dimension of the duct. Retainers are broken out without tools. The flush-floor routing of cables is possible through predetermined break points. Tapering in the side slots prevents the cables from falling out. Tested to DIN EN 50085-2-3. Special lengths on request.

Wiring trunking, type LK4 N 80025

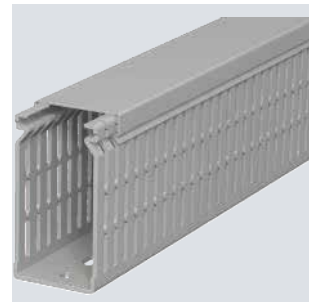
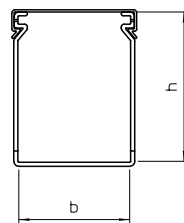


PVC

Type	Colour	Length mm	Dimension W x H mm	Min. order- ing quan- tity m	Item no.
LK4 N 80040	Stone grey	2000	40x80	2	6178227

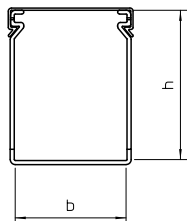
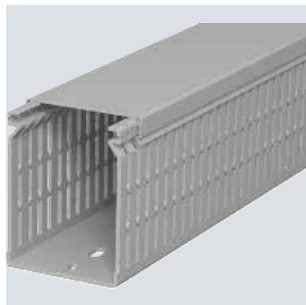
Wiring duct, incl. cover and base perforation, for horizontal and vertical routing of electrical cables in the switchgear cabinet. Designed as a metric duct. The nominal dimension of the system size corresponds to the internal dimension of the duct. Retainers are broken out without tools. The flush-floor routing of cables is possible through predetermined break points. Tapering in the side slots prevents the cables from falling out. Tested to DIN EN 50085-2-3. Special lengths on request.

Wiring trunking, type LK4 N 80040



Wiring trunking, type LK4 N 80060

PVC

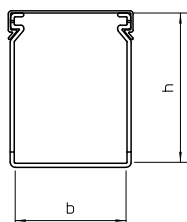
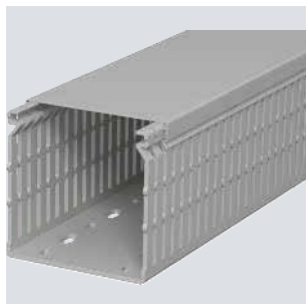


Type	Colour	Length mm	Dimension W x H mm	Min. order- ing quan- tity m	Item no.
LK4 N 80060	Stone grey	2000	60x80	2	6178229

Wiring duct, incl. cover and base perforation, for horizontal and vertical routing of electrical cables in the switchgear cabinet. Designed as a metric duct. The nominal dimension of the system size corresponds to the internal dimension of the duct. Retainers are broken out without tools. The flush-floor routing of cables is possible through predetermined break points. Tapering in the side slots prevents the cables from falling out. Tested to DIN EN 50085-2-3. Special lengths on request.

Wiring trunking, type LK4 N 80080

PVC

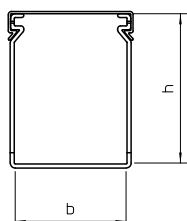
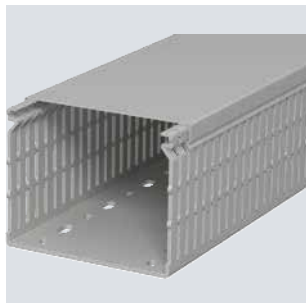


Type	Colour	Length mm	Dimension W x H mm	Min. order- ing quan- tity m	Item no.
LK4 N 80080	Stone grey	2000	80x80	2	6178231

Wiring duct, incl. cover and base perforation, for horizontal and vertical routing of electrical cables in the switchgear cabinet. Designed as a metric duct. The nominal dimension of the system size corresponds to the internal dimension of the duct. Retainers are broken out without tools. The flush-floor routing of cables is possible through predetermined break points. Tapering in the side slots prevents the cables from falling out. Tested to DIN EN 50085-2-3. Special lengths on request.

Wiring trunking, type LK4 N 80100

PVC

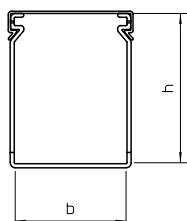
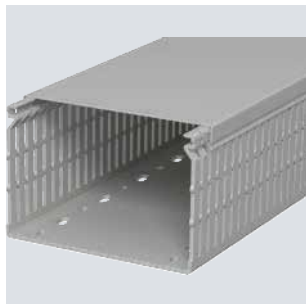


Type	Colour	Length mm	Dimension W x H mm	Min. order- ing quan- tity m	Item no.
LK4 N 80100	Stone grey	2000	100x80	2	6178233

Wiring duct, incl. cover and base perforation, for horizontal and vertical routing of electrical cables in the switchgear cabinet. Designed as a metric duct. The nominal dimension of the system size corresponds to the internal dimension of the duct. Retainers are broken out without tools. The flush-floor routing of cables is possible through predetermined break points. Tapering in the side slots prevents the cables from falling out. Tested to DIN EN 50085-2-3. Special lengths on request.

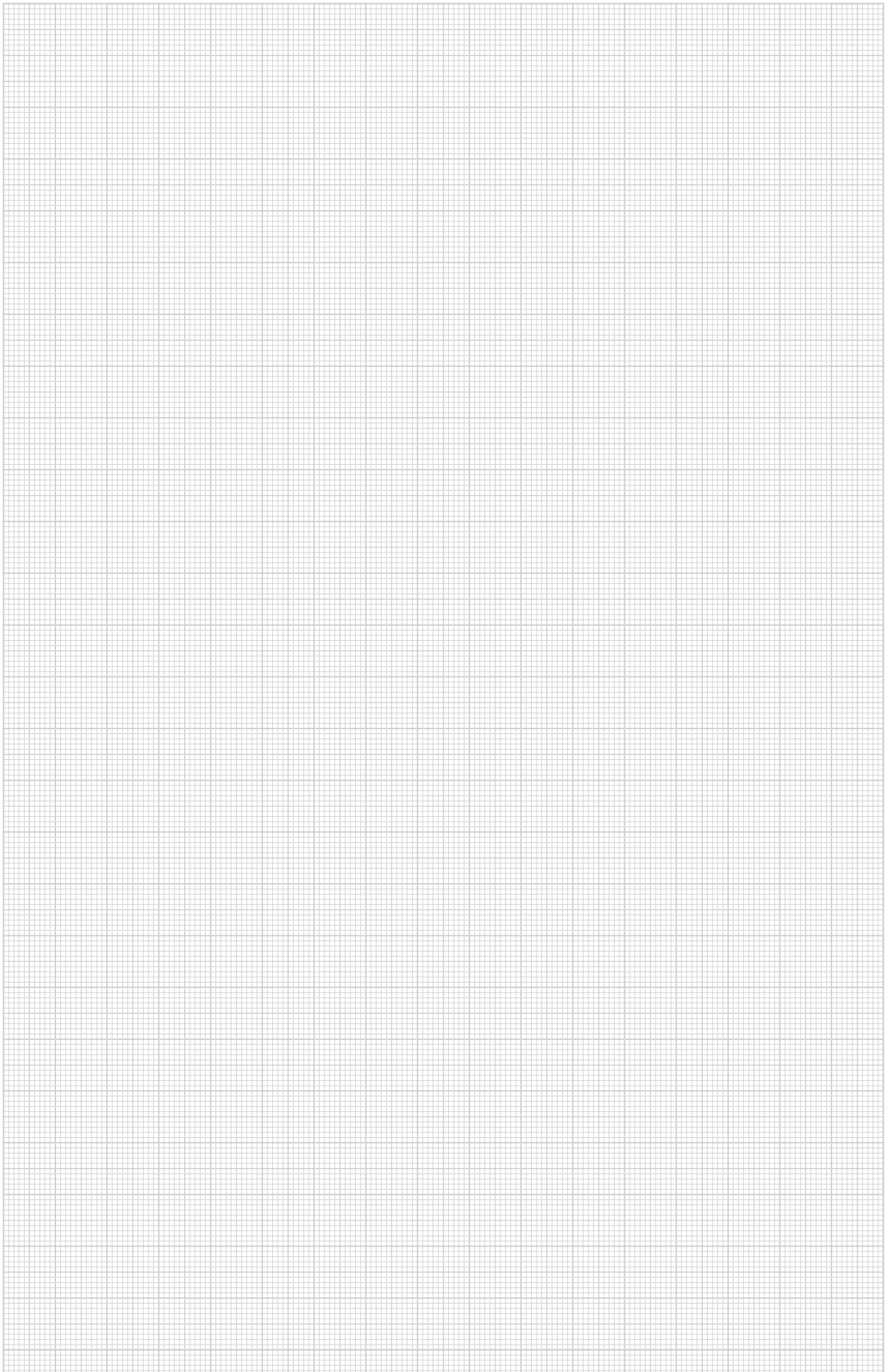
Wiring trunking, type LK4 N 80120

PVC



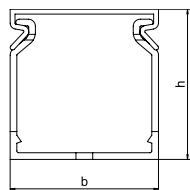
Type	Colour	Length mm	Dimension W x H mm	Min. order- ing quan- tity m	Item no.
LK4 N 80120	Stone grey	2000	120x80	2	6178236

Wiring duct, incl. cover and base perforation, for horizontal and vertical routing of electrical cables in the switchgear cabinet. Designed as a metric duct. The nominal dimension of the system size corresponds to the internal dimension of the duct. Retainers are broken out without tools. The flush-floor routing of cables is possible through predetermined break points. Tapering in the side slots prevents the cables from falling out. Tested to DIN EN 50085-2-3. Special lengths on request.



Wiring trunking, type LK4H 30030

PC/
ABS

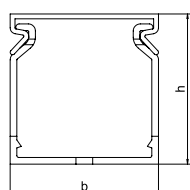


Type	Colour	Length mm	Width mm	Height mm	Min. order- ing quan- tity m	Item no.
LK4H 30030	Light grey	2000	30	30	2	6132540

Halogen-free wiring duct, incl. cover and base perforation, for horizontal and vertical routing of electrical cables in the switchgear cabinet. With double-sided adhesive tape on the duct base as a mounting aid. Designed as a metric duct. Retainers are broken out without tools. Special lengths on request.

Wiring trunking, type LK4H 40025

PC/
ABS

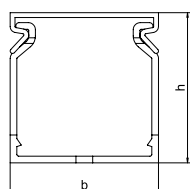
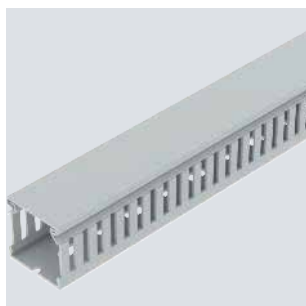


Type	Colour	Length mm	Width mm	Height mm	Min. order- ing quan- tity m	Item no.
LK4H 40025	Light grey	2000	25	40	2	6132544

Halogen-free wiring duct, incl. cover and base perforation, for horizontal and vertical routing of electrical cables in the switchgear cabinet. With double-sided adhesive tape on the duct base as a mounting aid. Designed as a metric duct. Retainers are broken out without tools. Special lengths on request.

Wiring trunking, type LK4H 40040

PC/
ABS

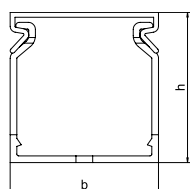
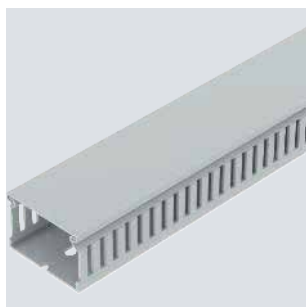


Type	Colour	Length mm	Width mm	Height mm	Min. order- ing quan- tity m	Item no.
LK4H 40040	Light grey	2000	40	40	2	6132546

Halogen-free wiring duct, incl. cover and base perforation, for horizontal and vertical routing of electrical cables in the switchgear cabinet. With double-sided adhesive tape on the duct base as a mounting aid. Designed as a metric duct. Retainers are broken out without tools. Special lengths on request.

Wiring trunking, type LK4H 40060

PC/
ABS



Type	Colour	Length mm	Width mm	Height mm	Min. order- ing quan- tity m	Item no.
LK4H 40060	Light grey	2000	60	40	2	6132548

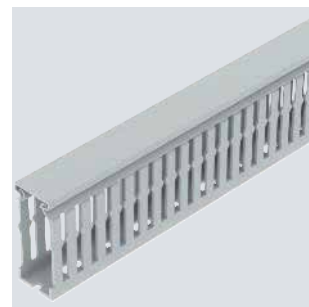
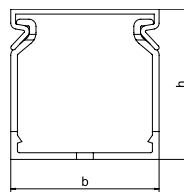
Halogen-free wiring duct, incl. cover and base perforation, for horizontal and vertical routing of electrical cables in the switchgear cabinet. With double-sided adhesive tape on the duct base as a mounting aid. Designed as a metric duct. Retainers are broken out without tools. Special lengths on request.

PC/
ABS

Wiring trunking, type LK4H N 60025

Type	Colour	Length mm	Width mm	Height mm	Min. order- ing quan- tity m	Item no.
LK4H N 60025	Light grey	2000	25	60	2	6132550

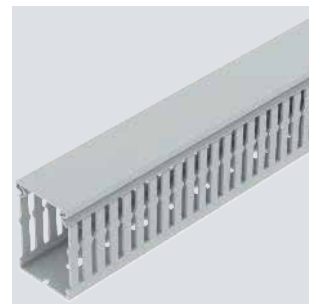
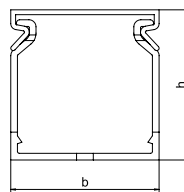
Halogen-free wiring duct, incl. cover and base perforation, for horizontal and vertical routing of electrical cables in the switchgear cabinet. With double-sided adhesive tape on the duct base as a mounting aid. Designed as a metric duct. Retainers are broken out without tools. Special lengths on request.

PC/
ABS

Wiring trunking, type LK4H N 60040

Type	Colour	Length mm	Width mm	Height mm	Min. order- ing quan- tity m	Item no.
LK4H N 60040	Light grey	2000	40	60	2	6132552

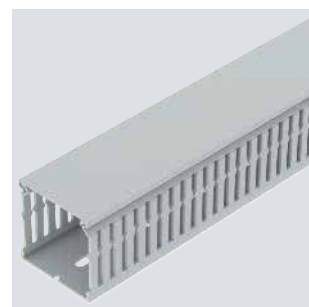
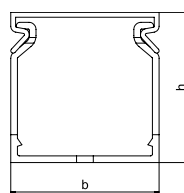
Halogen-free wiring duct, incl. cover and base perforation, for horizontal and vertical routing of electrical cables in the switchgear cabinet. With double-sided adhesive tape on the duct base as a mounting aid. Designed as a metric duct. Retainers are broken out without tools. Special lengths on request.

PC/
ABS

Wiring trunking, type LK4H N 60060

Type	Colour	Length mm	Width mm	Height mm	Min. order- ing quan- tity m	Item no.
LK4H N 60060	Light grey	2000	60	60	2	6132554

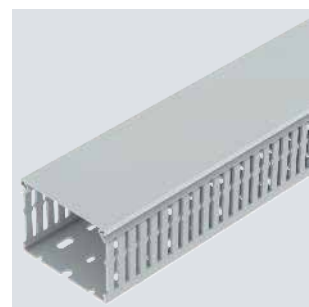
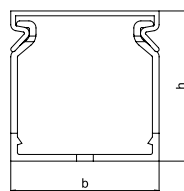
Halogen-free wiring duct, incl. cover and base perforation, for horizontal and vertical routing of electrical cables in the switchgear cabinet. With double-sided adhesive tape on the duct base as a mounting aid. Designed as a metric duct. Retainers are broken out without tools. Special lengths on request.

PC/
ABS

Wiring trunking, type LK4H N 60080

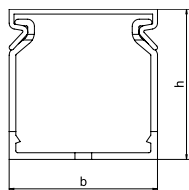
Type	Colour	Length mm	Width mm	Height mm	Min. order- ing quan- tity m	Item no.
LK4H N 60080	Light grey	2000	80	60	2	6132556

Halogen-free wiring duct, incl. cover and base perforation, for horizontal and vertical routing of electrical cables in the switchgear cabinet. With double-sided adhesive tape on the duct base as a mounting aid. Designed as a metric duct. Retainers are broken out without tools. Special lengths on request.



Wiring trunking, type LK4H N 80025

PC/
ABS

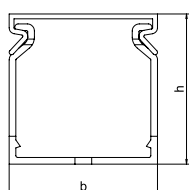


Type	Colour	Length mm	Width mm	Height mm	Min. order- ing quan- tity m	Item no.
LK4H N 80025	Light grey	2000	25	80	2	6132560

Halogen-free wiring duct, incl. cover and base perforation, for horizontal and vertical routing of electrical cables in the switchgear cabinet. With double-sided adhesive tape on the duct base as a mounting aid. Designed as a metric duct. Retainers are broken out without tools. Special lengths on request.

Wiring trunking, type LK4H N 80040

PC/
ABS

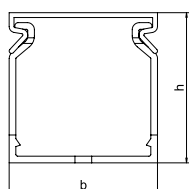
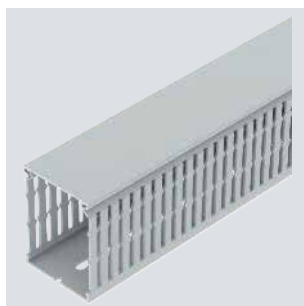


Type	Colour	Length mm	Width mm	Height mm	Min. order- ing quan- tity m	Item no.
LK4H N 80040	Light grey	2000	40	80	2	6132562

Halogen-free wiring duct, incl. cover and base perforation, for horizontal and vertical routing of electrical cables in the switchgear cabinet. With double-sided adhesive tape on the duct base as a mounting aid. Designed as a metric duct. Retainers are broken out without tools. Special lengths on request.

Wiring trunking, type LK4H N 80060

PC/
ABS

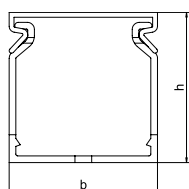
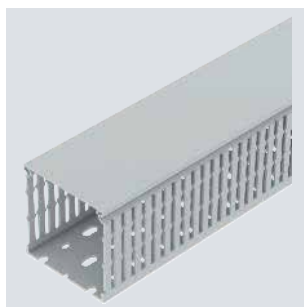


Type	Colour	Length mm	Width mm	Height mm	Min. order- ing quan- tity m	Item no.
LK4H N 80060	Light grey	2000	60	80	2	6132564

Halogen-free wiring duct, incl. cover and base perforation, for horizontal and vertical routing of electrical cables in the switchgear cabinet. With double-sided adhesive tape on the duct base as a mounting aid. Designed as a metric duct. Retainers are broken out without tools. Special lengths on request.

Wiring trunking, type LK4H N 80080

PC/
ABS



Type	Colour	Length mm	Width mm	Height mm	Min. order- ing quan- tity m	Item no.
LK4H N 80080	Light grey	2000	80	80	2	6132566

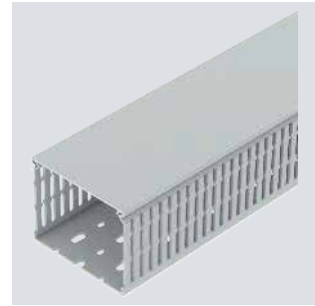
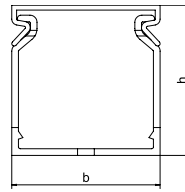
Halogen-free wiring duct, incl. cover and base perforation, for horizontal and vertical routing of electrical cables in the switchgear cabinet. With double-sided adhesive tape on the duct base as a mounting aid. Designed as a metric duct. Retainers are broken out without tools. Special lengths on request.

PC/
ABS

Wiring trunking, type LK4H N 80100

Type	Colour	Length mm	Width mm	Height mm	Min. order- ing quan- tity m	Item no.
LK4H N 80100	Light grey	2000	100	80	2	6132568

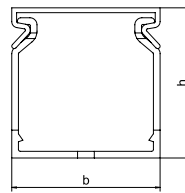
Halogen-free wiring duct, incl. cover and base perforation, for horizontal and vertical routing of electrical cables in the switchgear cabinet. With double-sided adhesive tape on the duct base as a mounting aid. Designed as a metric duct. Retainers are broken out without tools. Special lengths on request.

PC/
ABS

Wiring trunking, type LK4H N 10040

Type	Colour	Length mm	Width mm	Height mm	Min. order- ing quan- tity m	Item no.
LK4H N 10040	Light grey	2000	40	100	2	6132570

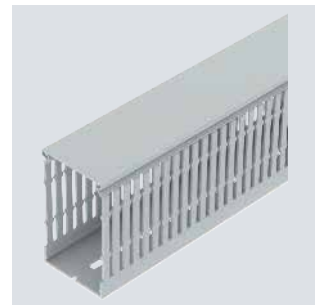
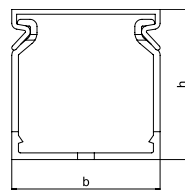
Halogen-free wiring duct, incl. cover and base perforation, for horizontal and vertical routing of electrical cables in the switchgear cabinet. With double-sided adhesive tape on the duct base as a mounting aid. Designed as a metric duct. Retainers are broken out without tools. Special lengths on request.

PC/
ABS

Wiring trunking, type LK4H N 10060

Type	Colour	Length mm	Width mm	Height mm	Min. order- ing quan- tity m	Item no.
LK4H N 10060	Light grey	2000	60	100	2	6132572

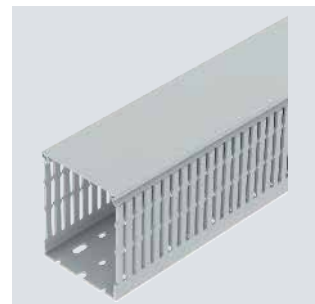
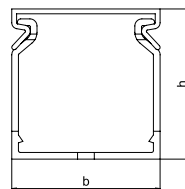
Halogen-free wiring duct, incl. cover and base perforation, for horizontal and vertical routing of electrical cables in the switchgear cabinet. With double-sided adhesive tape on the duct base as a mounting aid. Designed as a metric duct. Retainers are broken out without tools. Special lengths on request.

PC/
ABS

Wiring trunking, type LK4H N 10080

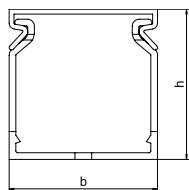
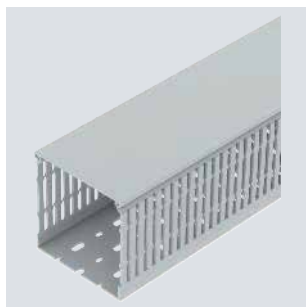
Type	Colour	Length mm	Width mm	Height mm	Min. order- ing quan- tity m	Item no.
LK4H N 10080	Light grey	2000	80	100	2	6132574

Halogen-free wiring duct, incl. cover and base perforation, for horizontal and vertical routing of electrical cables in the switchgear cabinet. With double-sided adhesive tape on the duct base as a mounting aid. Designed as a metric duct. Retainers are broken out without tools. Special lengths on request.



Wiring trunking, type LK4H N 100100

PC/
ABS



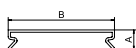
Type	Colour	Length mm	Width mm	Height mm	Min. order- ing quan- tity m	Item no.
LK4H N 100100	Light grey	2000	100	100	2	6132576

Halogen-free wiring duct, incl. cover and base perforation, for horizontal and vertical routing of electrical cables in the switchgear cabinet. With double-sided adhesive tape on the duct base as a mounting aid. Designed as a metric duct. Retainers are broken out without tools. Special lengths on request.

Covers, LK4H wiring trunking

Cover LK4H 25

PC/
ABS

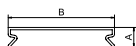
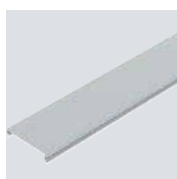


Type	Colour	Length mm	Width mm	Height mm	Min. order- ing quan- tity m	Item no.
LK4H D 25	Light grey	2000	25	10	2	6132580

Trunking cover for replacement requirements.

Cover LK4H 60

PC/
ABS

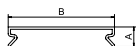


Type	Colour	Length mm	Width mm	Height mm	Min. order- ing quan- tity m	Item no.
LK4H D 60	Light grey	2000	60	10	2	6132582

Trunking cover for replacement requirements.

Cover LK4H 80

PC/
ABS

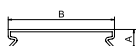


Type	Colour	Length mm	Width mm	Height mm	Min. order- ing quan- tity m	Item no.
LK4H D 80	Light grey	2000	80	10	2	6132584

Trunking cover for replacement requirements.

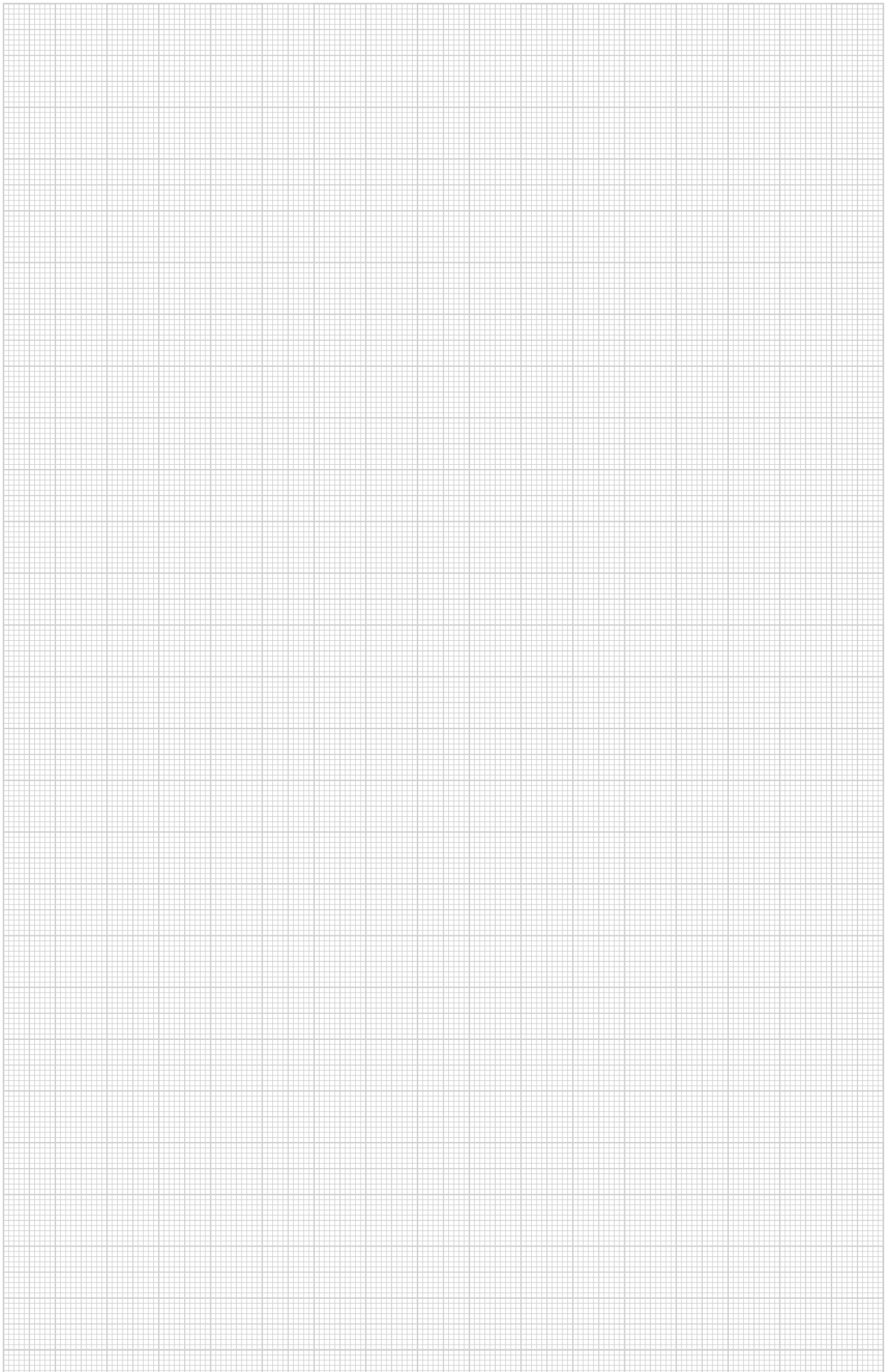
Cover LK4H 100

PC/
ABS



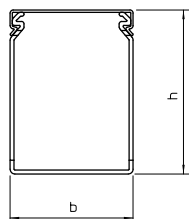
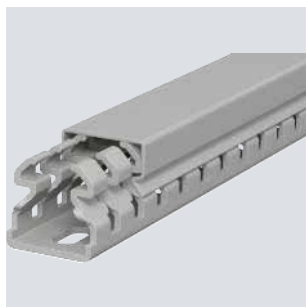
Type	Colour	Length mm	Width mm	Height mm	Min. order- ing quan- tity m	Item no.
LK4H D 100	Light grey	2000	100	10	2	6132586

Trunking cover for replacement requirements.



Wiring trunking, type LKV 25025

PVC

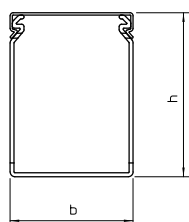
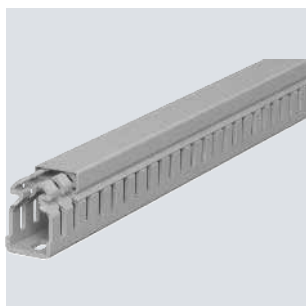


Type	Colour	Length mm	Dimension W x H mm	Min. order- ing quan- tity m	Item no.
LKV 25025	Stone grey	2000	25x25	32	6178302

Wiring duct according to DIN EN 50085-2-3, incl. cover and base perforation, for horizontal and vertical routing of electrical cables in the switchgear cabinet. Designed as a DIN duct. Retainers are broken out without tools. The flush-floor routing of cables is possible through predetermined break points. Tested to DIN EN 50085-2-3. Special lengths on request.

Wiring trunking, type LKV 37025

PVC

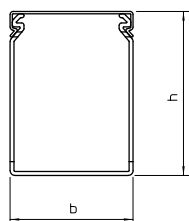
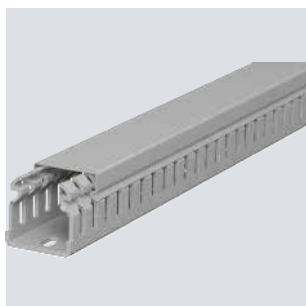


Type	Colour	Length mm	Dimension W x H mm	Min. order- ing quan- tity m	Item no.
LKV 37025	Stone grey	2000	25x37,5	32	6178305

Wiring duct according to DIN EN 50085-2-3, incl. cover and base perforation, for horizontal and vertical routing of electrical cables in the switchgear cabinet. Designed as a DIN duct. Retainers are broken out without tools. The flush-floor routing of cables is possible through predetermined break points. Tested to DIN EN 50085-2-3. Special lengths on request.

Wiring trunking, type LKV 37037

PVC

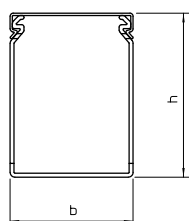
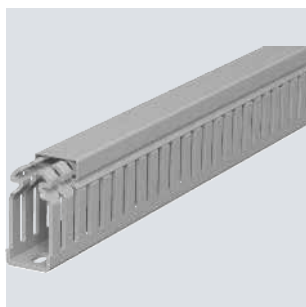


Type	Colour	Length mm	Dimension W x H mm	Min. order- ing quan- tity m	Item no.
LKV 37037	Stone grey	2000	37,5 x 37,5	60	6178307

Wiring duct according to DIN EN 50085-2-3, incl. cover and base perforation, for horizontal and vertical routing of electrical cables in the switchgear cabinet. Designed as a DIN duct. Retainers are broken out without tools. The flush-floor routing of cables is possible through predetermined break points. Tested to DIN EN 50085-2-3. Special lengths on request.

Wiring trunking, type LKV 50025

PVC



Type	Colour	Length mm	Dimension W x H mm	Min. order- ing quan- tity m	Item no.
LKV 50025	Stone grey	2000	25x50	60	6178310

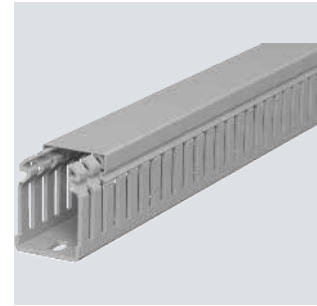
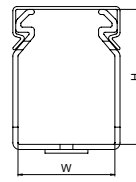
Wiring duct according to DIN EN 50085-2-3, incl. cover and base perforation, for horizontal and vertical routing of electrical cables in the switchgear cabinet. Designed as a DIN duct. Retainers are broken out without tools. The flush-floor routing of cables is possible through predetermined break points. Tested to DIN EN 50085-2-3. Special lengths on request.

PVC

Wiring trunking, type LKV 50037

Type	Colour	Length mm	Dimension W x H mm	Min. order- ing quan- tity m	Item no.
LKV 50037	Stone grey	2000	37,5x50	48	6178312

Wiring duct according to DIN EN 50085-2-3, incl. cover and base perforation, for horizontal and vertical routing of electrical cables in the switchgear cabinet. Designed as a DIN duct. Retainers are broken out without tools. The flush-floor routing of cables is possible through predetermined break points. Tested to DIN EN 50085-2-3. Special lengths on request.

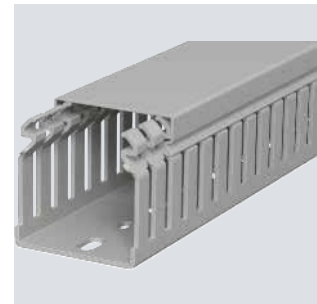
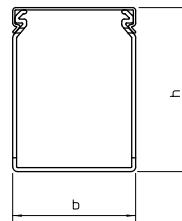


PVC

Wiring trunking, type LKV 50050

Type	Colour	Length mm	Dimension W x H mm	Min. order- ing quan- tity m	Item no.
LKV 50050	Stone grey	2000	50x50	36	6178314

Wiring duct according to DIN EN 50085-2-3, incl. cover and base perforation, for horizontal and vertical routing of electrical cables in the switchgear cabinet. Designed as a DIN duct. Retainers are broken out without tools. The flush-floor routing of cables is possible through predetermined break points. Tested to DIN EN 50085-2-3. Special lengths on request.

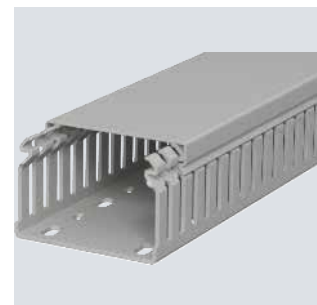
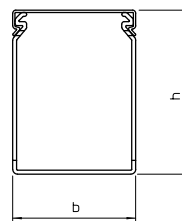


PVC

Wiring trunking, type LKV 50075

Type	Colour	Length mm	Dimension W x H mm	Min. order- ing quan- tity m	Item no.
LKV 50075	Stone grey	2000	75x50	24	6178316

Wiring duct according to DIN EN 50085-2-3, incl. cover and base perforation, for horizontal and vertical routing of electrical cables in the switchgear cabinet. Designed as a DIN duct. Retainers are broken out without tools. The flush-floor routing of cables is possible through predetermined break points. Tested to DIN EN 50085-2-3. Special lengths on request.

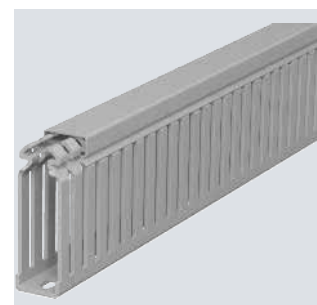
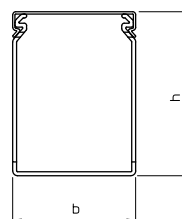


PVC

Wiring trunking, type LKV 75025

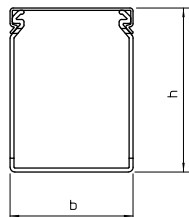
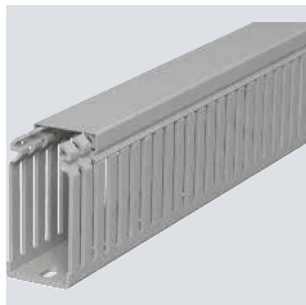
Type	Colour	Length mm	Dimension W x H mm	Min. order- ing quan- tity m	Item no.
LKV 75025	Stone grey	2000	25x75	40	6178320

Wiring duct according to DIN EN 50085-2-3, incl. cover and base perforation, for horizontal and vertical routing of electrical cables in the switchgear cabinet. Designed as a DIN duct. Retainers are broken out without tools. The flush-floor routing of cables is possible through predetermined break points. Tested to DIN EN 50085-2-3. Special lengths on request.



Wiring trunking, type LKV 75037

PVC

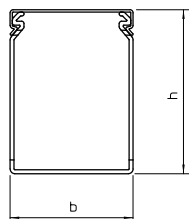
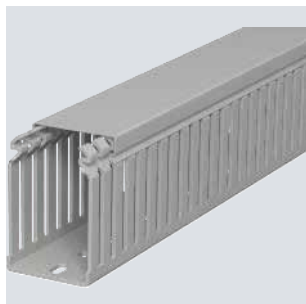


Type	Colour	Length mm	Dimension W x H mm	Min. order- ing quan- tity m	Item no.
LKV 75037	Stone grey	2000	37,5x75	32	6178322

Wiring duct according to DIN EN 50085-2-3, incl. cover and base perforation, for horizontal and vertical routing of electrical cables in the switchgear cabinet. Designed as a DIN duct. Retainers are broken out without tools. The flush-floor routing of cables is possible through predetermined break points. Tested to DIN EN 50085-2-3. Special lengths on request.

Wiring trunking, type LKV 75050

PVC

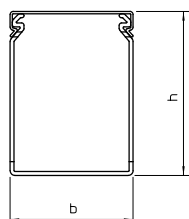
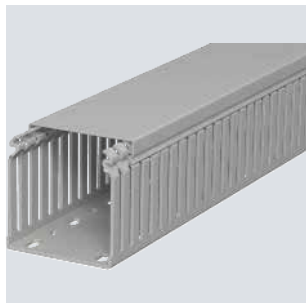


Type	Colour	Length mm	Dimension W x H mm	Min. order- ing quan- tity m	Item no.
LKV 75050	Stone grey	2000	50x75	24	6178324

Wiring duct according to DIN EN 50085-2-3, incl. cover and base perforation, for horizontal and vertical routing of electrical cables in the switchgear cabinet. Designed as a DIN duct. Retainers are broken out without tools. The flush-floor routing of cables is possible through predetermined break points. Tested to DIN EN 50085-2-3. Special lengths on request.

Wiring trunking, type LKV 75075

PVC

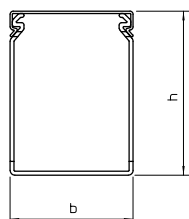
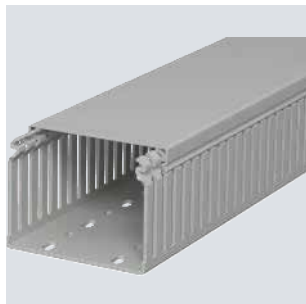


Type	Colour	Length mm	Dimension W x H mm	Min. order- ing quan- tity m	Item no.
LKV 75075	Stone grey	2000	75x75	16	6178326

Wiring duct according to DIN EN 50085-2-3, incl. cover and base perforation, for horizontal and vertical routing of electrical cables in the switchgear cabinet. Designed as a DIN duct. Retainers are broken out without tools. The flush-floor routing of cables is possible through predetermined break points. Tested to DIN EN 50085-2-3. Special lengths on request.

Wiring trunking, type LKV 75100

PVC



Type	Colour	Length mm	Dimension W x H mm	Min. order- ing quan- tity m	Item no.
LKV 75100	Stone grey	2000	100x75	16	6178328

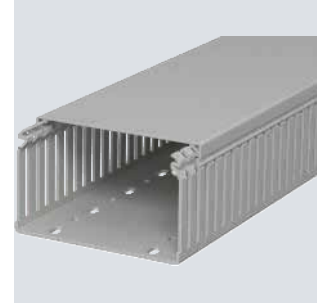
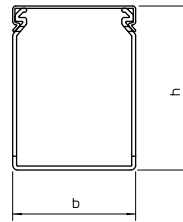
Wiring duct according to DIN EN 50085-2-3, incl. cover and base perforation, for horizontal and vertical routing of electrical cables in the switchgear cabinet. Designed as a DIN duct. Retainers are broken out without tools. The flush-floor routing of cables is possible through predetermined break points. Tested to DIN EN 50085-2-3. Special lengths on request.

PVC

Wiring trunking, type LKV 75125

Type	Colour	Length mm	Dimension W x H mm	Min. order- ing quan- tity m	Item no.
LKV 75125	Stone grey	2000	125x75	8	6178330

Wiring duct according to DIN EN 50085-2-3, incl. cover and base perforation, for horizontal and vertical routing of electrical cables in the switchgear cabinet. Designed as a DIN duct. Retainers are broken out without tools. The flush-floor routing of cables is possible through predetermined break points. Tested to DIN EN 50085-2-3. Special lengths on request.

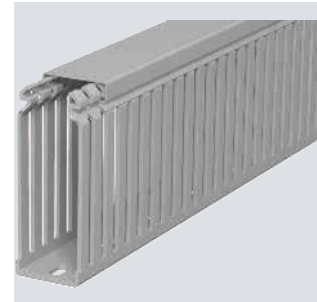
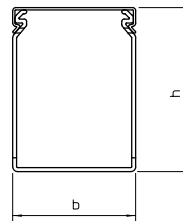


PVC

Wiring trunking, type LKV 10037

Type	Colour	Length mm	Dimension W x H mm	Min. order- ing quan- tity m	Item no.
LKV 10037	Stone grey	2000	37,5x100	32	6178334

Wiring duct according to DIN EN 50085-2-3, incl. cover and base perforation, for horizontal and vertical routing of electrical cables in the switchgear cabinet. Designed as a DIN duct. Retainers are broken out without tools. The flush-floor routing of cables is possible through predetermined break points. Tested to DIN EN 50085-2-3. Special lengths on request.

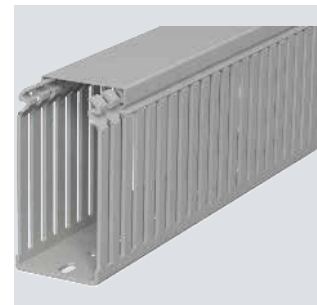
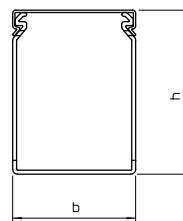


PVC

Wiring trunking, type LKV 10050

Type	Colour	Length mm	Dimension W x H mm	Min. order- ing quan- tity m	Item no.
LKV 10050	Stone grey	2000	50x100	24	6178336

Wiring duct according to DIN EN 50085-2-3, incl. cover and base perforation, for horizontal and vertical routing of electrical cables in the switchgear cabinet. Designed as a DIN duct. Retainers are broken out without tools. The flush-floor routing of cables is possible through predetermined break points. Tested to DIN EN 50085-2-3. Special lengths on request.

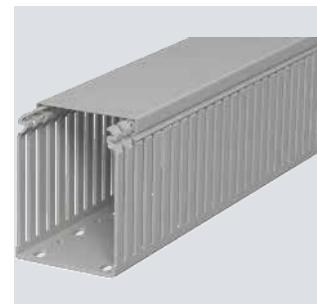
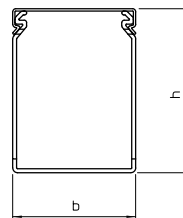


PVC

Wiring trunking, type LKV 10075

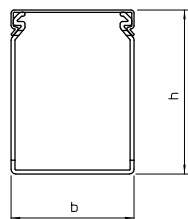
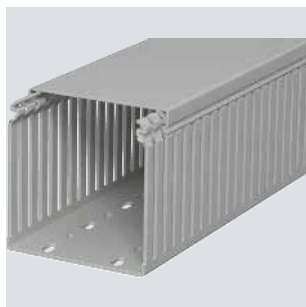
Type	Colour	Length mm	Dimension W x H mm	Min. order- ing quan- tity m	Item no.
LKV 10075	Stone grey	2000	75x100	16	6178338

Wiring duct according to DIN EN 50085-2-3, incl. cover and base perforation, for horizontal and vertical routing of electrical cables in the switchgear cabinet. Designed as a DIN duct. Retainers are broken out without tools. The flush-floor routing of cables is possible through predetermined break points. Tested to DIN EN 50085-2-3. Special lengths on request.



Wiring trunking, type LKV 100100

PVC



Type	Colour	Length mm	Dimension W x H mm	Min. order- ing quan- tity m	Item no.
LKV 100100	Stone grey	2000	100x100	8	6178341

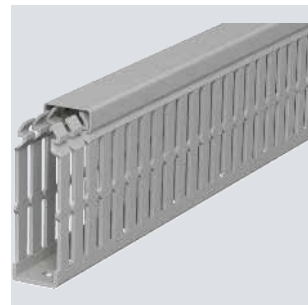
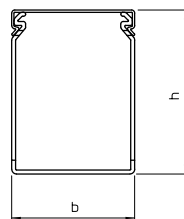
Wiring duct according to DIN EN 50085-2-3, incl. cover and base perforation, for horizontal and vertical routing of electrical cables in the switchgear cabinet. Designed as a DIN duct. Retainers are broken out without tools. The flush-floor routing of cables is possible through predetermined break points. Tested to DIN EN 50085-2-3. Special lengths on request.

PVC

Type	Colour	Length mm	Dimension W x H mm	Min. order- ing quan- tity m	Item no.
LKV N 75025	Stone grey	2000	25x75	40	6178420

Wiring duct according to DIN EN 50085-2-3, incl. cover and base perforation, for horizontal and vertical routing of electrical cables in the switchgear cabinet. Designed as a DIN duct. Retainers are broken out without tools. The flush-floor routing of cables is possible through predetermined break points. Tapering in the side slots prevents the cables from falling out. Tested to DIN EN 50085-2-3. Special lengths on request.

Wiring trunking, type LKV N 75025

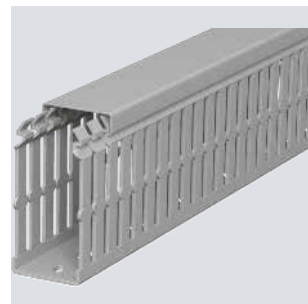
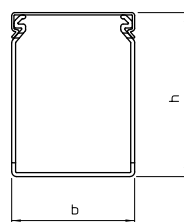


PVC

Type	Colour	Length mm	Dimension W x H mm	Min. order- ing quan- tity m	Item no.
LKV N 75037	Stone grey	2000	37,5x75	32	6178422

Wiring duct according to DIN EN 50085-2-3, incl. cover and base perforation, for horizontal and vertical routing of electrical cables in the switchgear cabinet. Designed as a DIN duct. Retainers are broken out without tools. The flush-floor routing of cables is possible through predetermined break points. Tapering in the side slots prevents the cables from falling out. Tested to DIN EN 50085-2-3. Special lengths on request.

Wiring trunking, type LKV N 75037

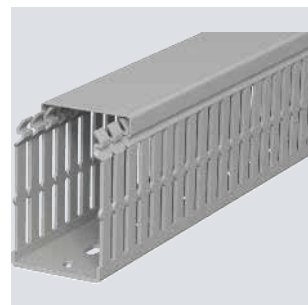
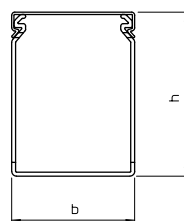


PVC

Type	Colour	Length mm	Dimension W x H mm	Min. order- ing quan- tity m	Item no.
LKV N 75050	Stone grey	2000	50x75	24	6178424

Wiring duct according to DIN EN 50085-2-3, incl. cover and base perforation, for horizontal and vertical routing of electrical cables in the switchgear cabinet. Designed as a DIN duct. Retainers are broken out without tools. The flush-floor routing of cables is possible through predetermined break points. Tapering in the side slots prevents the cables from falling out. Tested to DIN EN 50085-2-3. Special lengths on request.

Wiring trunking, type LKV N 75050

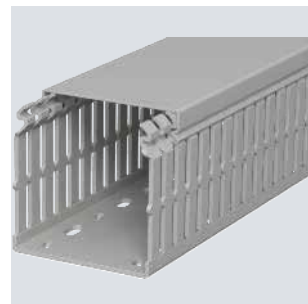
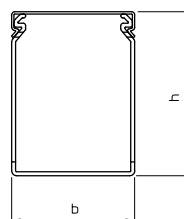


PVC

Type	Colour	Length mm	Dimension W x H mm	Min. order- ing quan- tity m	Item no.
LKV N 75075	Stone grey	2000	75x75	16	6178426

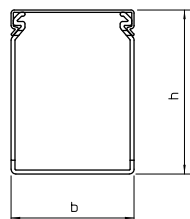
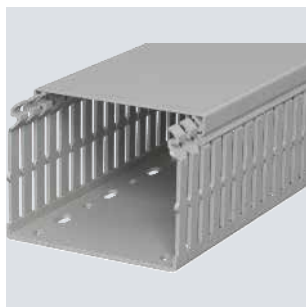
Wiring duct according to DIN EN 50085-2-3, incl. cover and base perforation, for horizontal and vertical routing of electrical cables in the switchgear cabinet. Designed as a DIN duct. Retainers are broken out without tools. The flush-floor routing of cables is possible through predetermined break points. Tapering in the side slots prevents the cables from falling out. Tested to DIN EN 50085-2-3. Special lengths on request.

Wiring trunking, type LKV N 75075



Wiring trunking, type LKV N 75100

PVC

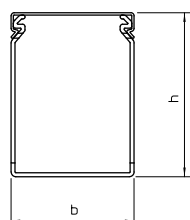
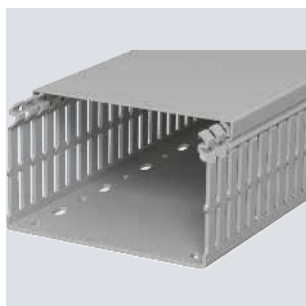


Type	Colour	Length mm	Dimension W x H mm	Min. order- ing quan- tity m	Item no.
LKV N 75100	Stone grey	2000	100x75	16	6178428

Wiring duct according to DIN EN 50085-2-3, incl. cover and base perforation, for horizontal and vertical routing of electrical cables in the switchgear cabinet. Designed as a DIN duct. Retainers are broken out without tools. The flush-floor routing of cables is possible through predetermined break points. Tapering in the side slots prevents the cables from falling out. Tested to DIN EN 50085-2-3. Special lengths on request.

Wiring trunking, type LKV N 75125

PVC

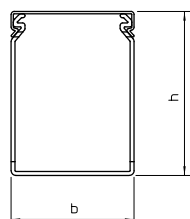
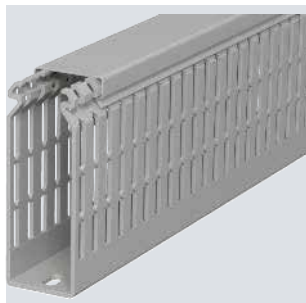


Type	Colour	Length mm	Dimension W x H mm	Min. order- ing quan- tity m	Item no.
LKV N 75125	Stone grey	2000	125x75	8	6178430

Wiring duct according to DIN EN 50085-2-3, incl. cover and base perforation, for horizontal and vertical routing of electrical cables in the switchgear cabinet. Designed as a DIN duct. Retainers are broken out without tools. The flush-floor routing of cables is possible through predetermined break points. Tapering in the side slots prevents the cables from falling out. Tested to DIN EN 50085-2-3. Special lengths on request.

Wiring trunking, type LKV N 10037

PVC

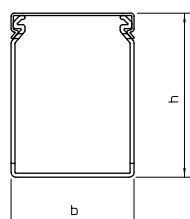
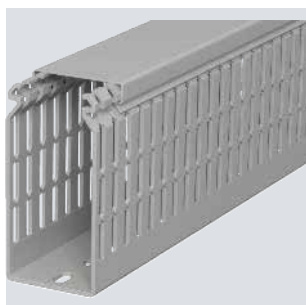


Type	Colour	Length mm	Dimension W x H mm	Min. order- ing quan- tity m	Item no.
LKV N 10037	Stone grey	2000	37,5x100	32	6178435

Wiring duct according to DIN EN 50085-2-3, incl. cover and base perforation, for horizontal and vertical routing of electrical cables in the switchgear cabinet. Designed as a DIN duct. Retainers are broken out without tools. The flush-floor routing of cables is possible through predetermined break points. Tapering in the side slots prevents the cables from falling out. Tested to DIN EN 50085-2-3. Special lengths on request.

Wiring trunking, type LKV N 10050

PVC



Type	Colour	Length mm	Dimension W x H mm	Min. order- ing quan- tity m	Item no.
LKV N 10050	Stone grey	2000	50x100	24	6178437

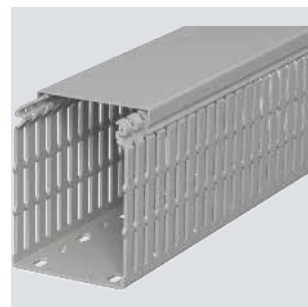
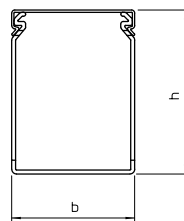
Wiring duct according to DIN EN 50085-2-3, incl. cover and base perforation, for horizontal and vertical routing of electrical cables in the switchgear cabinet. Designed as a DIN duct. Retainers are broken out without tools. The flush-floor routing of cables is possible through predetermined break points. Tapering in the side slots prevents the cables from falling out. Tested to DIN EN 50085-2-3. Special lengths on request.

PVC

Wiring trunking, type LKV N 10075

Type	Colour	Length mm	Dimension W x H mm	Min. order- ing quan- tity m	Item no.
LKV N 10075	Stone grey	2000	75x100	16	6178439

Wiring duct according to DIN EN 50085-2-3, incl. cover and base perforation, for horizontal and vertical routing of electrical cables in the switchgear cabinet. Designed as a DIN duct. Retainers are broken out without tools. The flush-floor routing of cables is possible through predetermined break points. Tapering in the side slots prevents the cables from falling out. Tested to DIN EN 50085-2-3. Special lengths on request.

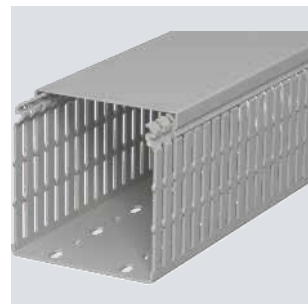
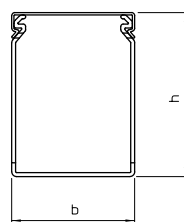


PVC

Wiring trunking, type LKV N 100100

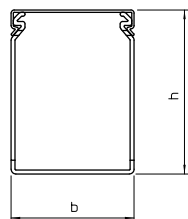
Type	Colour	Length mm	Dimension W x H mm	Min. order- ing quan- tity m	Item no.
LKV N 100100	Stone grey	2000	100x100	8	6178441

Wiring duct according to DIN EN 50085-2-3, incl. cover and base perforation, for horizontal and vertical routing of electrical cables in the switchgear cabinet. Designed as a DIN duct. Retainers are broken out without tools. The flush-floor routing of cables is possible through predetermined break points. Tapering in the side slots prevents the cables from falling out. Tested to DIN EN 50085-2-3. Special lengths on request.



Wiring trunking, type LKVH 50037

PC/
ABS

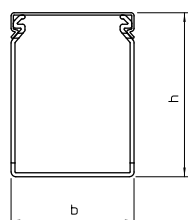


Type	Colour	Length mm	Dimension W x H mm	Min. order- ing quan- tity m	Item no.
LKVH 50037	Light grey	2000	37,5 x 50	48	6178582

Halogen-free wiring duct according to DIN EN 50085-2-3, incl. cover and base perforation, for horizontal and vertical routing of electrical cables in the switchgear cabinet. Designed as a DIN duct. Retainers are broken out without tools. The flush-floor routing of cables is possible through predetermined break points. Tested to DIN EN 50085-2-3. Special lengths on request.

Wiring trunking, type LKVH 50050

PC/
ABS

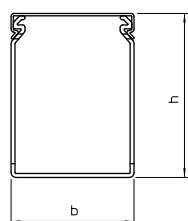


Type	Colour	Length mm	Dimension W x H mm	Min. order- ing quan- tity m	Item no.
LKVH 50050	Light grey	2000	50x50	36	6178585

Halogen-free wiring duct according to DIN EN 50085-2-3, incl. cover and base perforation, for horizontal and vertical routing of electrical cables in the switchgear cabinet. Designed as a DIN duct. Retainers are broken out without tools. The flush-floor routing of cables is possible through predetermined break points. Tested to DIN EN 50085-2-3. Special lengths on request.

Wiring trunking, type LKVH 50075

PC/
ABS

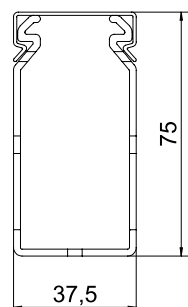
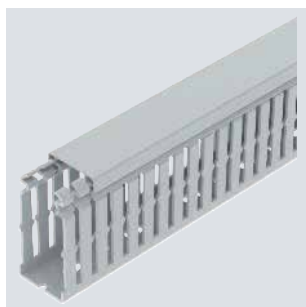


Type	Colour	Length mm	Dimension W x H mm	Min. order- ing quan- tity m	Item no.
LKVH 50075	Light grey	2000	75x50	24	6178588

Halogen-free wiring duct according to DIN EN 50085-2-3, incl. cover and base perforation, for horizontal and vertical routing of electrical cables in the switchgear cabinet. Designed as a DIN duct. Retainers are broken out without tools. The flush-floor routing of cables is possible through predetermined break points. Tested to DIN EN 50085-2-3. Special lengths on request.

Wiring trunking, type LKVH N 75037

PC/
ABS



Type	Colour	Length mm	Dimension W x H mm	Min. order- ing quan- tity m	Item no.
LKVH N 75037	Light grey	2000	37,5 x 75	32	6178552

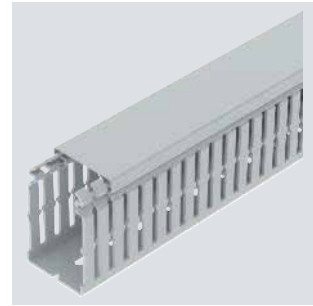
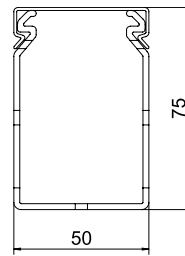
Halogen-free wiring duct according to DIN EN 50085-2-3, incl. cover and base perforation, for horizontal and vertical routing of electrical cables in the switchgear cabinet. Designed as a DIN duct. Retainers are broken out without tools. The flush-floor routing of cables is possible through predetermined break points. Tapering in the side slots prevents the cables from falling out. Tested to DIN EN 50085-2-3. Special lengths on request.

PC/
ABS

Wiring trunking, type LKVH N 75050

Type	Colour	Length mm	Dimension W x H mm	Min. order- ing quan- tity m	Item no.
LKVH N 75050	Light grey	2000	50x75	24	6178556

Halogen-free wiring duct according to DIN EN 50085-2-3, incl. cover and base perforation, for horizontal and vertical routing of electrical cables in the switchgear cabinet. Designed as a DIN duct. Retainers are broken out without tools. The flush-floor routing of cables is possible through predetermined break points. Tapering in the side slots prevents the cables from falling out. Tested to DIN EN 50085-2-3. Special lengths on request.

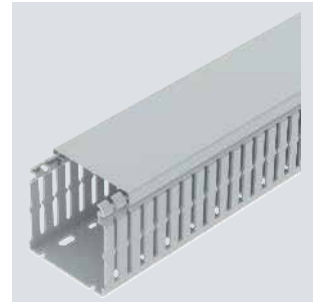
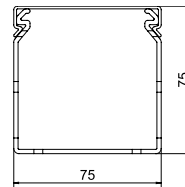


PC/
ABS

Wiring trunking, type LKVH N 75075

Type	Colour	Length mm	Dimension W x H mm	Min. order- ing quan- tity m	Item no.
LKVH N 75075	Light grey	2000	75x75	16	6178559

Halogen-free wiring duct according to DIN EN 50085-2-3, incl. cover and base perforation, for horizontal and vertical routing of electrical cables in the switchgear cabinet. Designed as a DIN duct. Retainers are broken out without tools. The flush-floor routing of cables is possible through predetermined break points. Tapering in the side slots prevents the cables from falling out. Tested to DIN EN 50085-2-3. Special lengths on request.

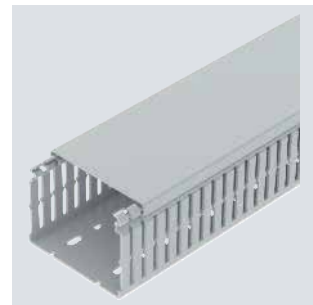
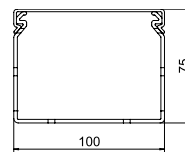


PC/
ABS

Wiring trunking, type LKVH N 75100

Type	Colour	Length mm	Dimension W x H mm	Min. order- ing quan- tity m	Item no.
LKVH N 75100	Light grey	2000	100x75	16	6178563

Halogen-free wiring duct according to DIN EN 50085-2-3, incl. cover and base perforation, for horizontal and vertical routing of electrical cables in the switchgear cabinet. Designed as a DIN duct. Retainers are broken out without tools. The flush-floor routing of cables is possible through predetermined break points. Tapering in the side slots prevents the cables from falling out. Tested to DIN EN 50085-2-3. Special lengths on request.

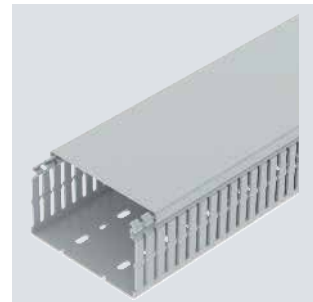
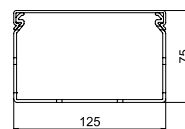


PC/
ABS

Wiring trunking, type LKVH N 75125

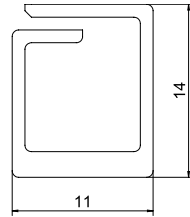
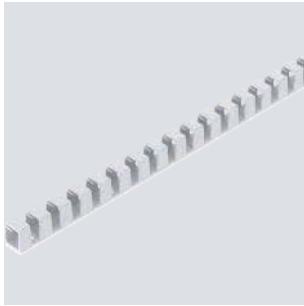
Type	Colour	Length mm	Dimension W x H mm	Min. order- ing quan- tity m	Item no.
LKVH N 75125	Light grey	2000	125x75	8	6178566

Halogen-free wiring duct according to DIN EN 50085-2-3, incl. cover and base perforation, for horizontal and vertical routing of electrical cables in the switchgear cabinet. Designed as a DIN duct. Retainers are broken out without tools. The flush-floor routing of cables is possible through predetermined break points. Tapering in the side slots prevents the cables from falling out. Tested to DIN EN 50085-2-3. Special lengths on request.



Wiring trunking VF 10, flexible

PP

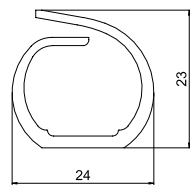


Type	Colour	Length mm	Width mm	Height mm	Min. order- ing quan- tity Piece	Item no.
VF 10 rws	Pure white	500	11	14	1	6132600
VF 10KB rws	Pure white	500	11	14	1	6132601

Flexible wiring trunking for horizontal and vertical routing in the switchgear cabinet.

Wiring trunking VF 20, flexible

PP

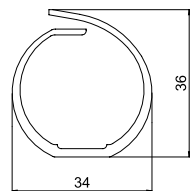


Type	Colour	Length mm	Width mm	Height mm	Min. order- ing quan- tity Piece	Item no.
VF 20 rws	Pure white	500	24	24	1	6132603
VF 20KB rws	Pure white	500	24	24	1	6132604

Flexible wiring duct for horizontal and vertical routing in the switchgear cabinet.

Wiring trunking VF 30, flexible

PP

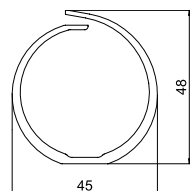


Type	Colour	Length mm	Width mm	Height mm	Min. order- ing quan- tity Piece	Item no.
VF 30 rws	Pure white	500	34	36	1	6132606
VF 30KB rws	Pure white	500	34	36	1	6132607

Flexible wiring trunking for horizontal and vertical routing in the switchgear cabinet.

Wiring trunking VF 40, flexible

PP



Type	Colour	Length mm	Width mm	Height mm	Min. order- ing quan- tity Piece	Item no.
VF 40 rws	Pure white	500	45	48	1	6132609
VF 40KB rws	Pure white	500	45	48	1	6132610

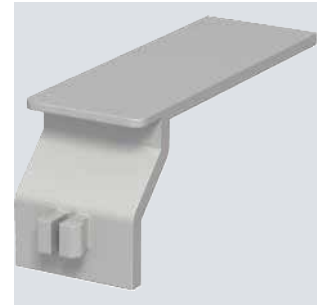
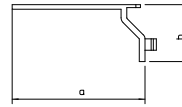
Flexible wiring trunking for horizontal and vertical routing in the switchgear cabinet.

PS

Wire retainer for type LK4 and LK4 N

Type	Colour	Dim. a mm	Dim. b mm	Min. order- ing quan- tity Piece	Item no.
LK4 H	Stone grey	56	25	100	6178092

Wire retainer for wiring trunking, type LK4 and LK4 N. The wire retainer prevents already inserted cables from falling out. These predetermined breaking points allow the length to be reduced for various trunking widths to 38, 28 and 23 mm.

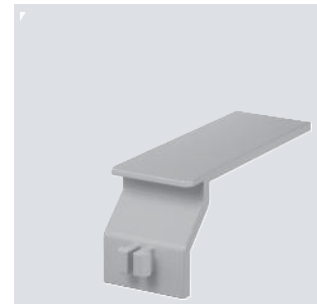
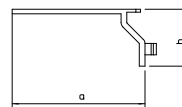


PS

Wire retainer for type LKV and LKV N

Type	Colour	Dim. a mm	Dim. b mm	Min. order- ing quan- tity Piece	Item no.
LKV H	Stone grey	56	25	100	6178349

Wire retainer for wiring trunking, type LKV and LKV N. The wire retainer prevents already inserted cables from falling out. These predetermined breaking points allow the length to be reduced for various trunking widths to 38, 28 and 23 mm.

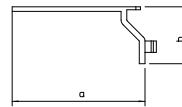


PS

Wire retainer for type LKVH

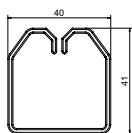
Type	Colour	Dim. a mm	Dim. b mm	Min. order- ing quan- tity Piece	Item no.
LKV H H	Light grey	56	25	100	6178650

Wire retainer for halogen-free wiring trunking, type LKVH. The wire retainer prevents already inserted cables from falling out. These predetermined breaking points allow the length to be reduced for various trunking widths to 38, 28 and 23 mm.



Cable retaining clip KHK50, trunking height 50

PVC

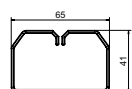


Type	Colour	Length mm	Width mm	Height mm	Min. order- ing quan- tity Piece	Item no.
LKV KHK5050	Stone grey	20	40	41	50	6132462

Cable retaining clamp for LKV wiring trunking. The cable retaining clamp encloses all cables in the trunking and prevents them falling out when the cover is taken off. With adhesive tape on the bottom part for mounting.

Cable retaining clip KHK50, trunking height 75

PVC

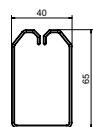


Type	Colour	Length mm	Width mm	Height mm	Min. order- ing quan- tity Piece	Item no.
LKV KHK5075	Stone grey	20	65	41	50	6132464

Cable retaining clamp for LKV wiring trunking. The cable retaining clamp encloses all cables in the trunking and prevents them falling out when the cover is taken off. With adhesive tape on the bottom part for mounting.

Cable retaining clip KHK75, trunking height 50

PVC

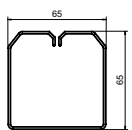


Type	Colour	Length mm	Width mm	Height mm	Min. order- ing quan- tity Piece	Item no.
LKV KHK7550	Stone grey	20	40	65	50	6132466

Cable retaining clamp for LKV wiring trunking. The cable retaining clamp encloses all cables in the trunking and prevents them falling out when the cover is taken off. With adhesive tape on the bottom part for mounting.

Cable retaining clip KHK75, trunking height 75

PVC

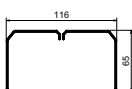


Type	Colour	Length mm	Width mm	Height mm	Min. order- ing quan- tity Piece	Item no.
LKV KHK 7575	Stone grey	20	65	65	50	6132468

Cable retaining clamp for LKV wiring trunking. The cable retaining clamp encloses all cables in the trunking and prevents them falling out when the cover is taken off. With adhesive tape on the bottom part for mounting.

Cable retaining clip KHK75, trunking height 125

PVC



Type	Colour	Length mm	Width mm	Height mm	Min. order- ing quan- tity Piece	Item no.
LKV KHK75125	Stone grey	20	116	65	50	6132460

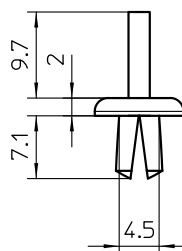
Cable retaining clamp for LKV wiring trunking. The cable retaining clamp encloses all cables in the trunking and prevents them falling out when the cover is taken off. With adhesive tape on the bottom part for mounting.

PP

Spreading rivet, KSN 1

Type	Colour	Min. ordering quantity	Piece	Item no.
KSN1	Light grey	100		6178520

The KNW1 riveting tool should be used for rapid mounting and for the optimum function.

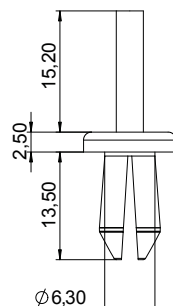


PA

Body-bound rivet, KSN 22

Type	Colour	Min. ordering quantity	Piece	Item no.
KSN22	Light grey	100		6178525

The KNW2 riveting tool should be used for rapid mounting and for the optimum function.
Dimension of the drill hole: 6.5 mm.



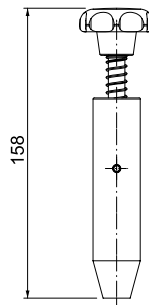
Plastic rivet tools

POM

Plastic rivet tool KNW1

Type	Colour	Dimension	Min. ordering quantity	Piece	Item no.
KNW1	Black	Ø4,5mm	1		6178527

Riveting tool for installing body-bound rivets of 4.5 mm.

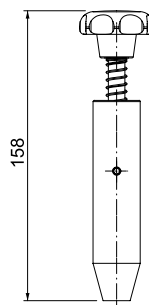


POM

Plastic rivet tool KNW2

Type	Colour	Dimension	Min. ordering quantity	Piece	Item no.
KNW2	Black	Ø6mm	1		6178529

Riveting tool for mounting spreading rivets of 6 mm.



Release pliers

Release pliers

St



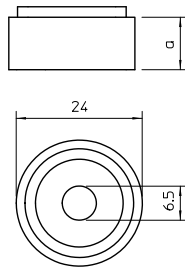
Type	Min. ordering quantity	Piece	Item no.
AKZ2	1		6178533

To notch the bars down to the trunking base.

Spacer

Spacer

PVC



Type	Colour	Dim. a mm	Min. ordering quantity	Piece	Item no.
AH1	Grey	12	100		6178540
AH2	Grey	20	100		6178542

Stackable spacer for height compensation between the different component heights.

Identification plates

Identification plate, intrinsically safe circuits



Type	Colour	Dimension mm	Min. ordering quantity	Piece	Item no.
VK ISCS 5012	Light blue	99x25mm	20		6178643

Sticker as an identification plate to attach onto wiring trunking in switchgear cabinets with self-protected power circuits.

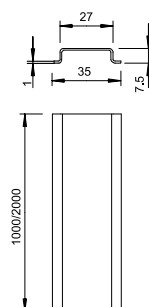
St GTP



Type	Version	Material thickness mm	Length mm	Bundle m	Min. order- ing quan- tity m	Item no.
2069 2M GTP	Unperforated	1	2000	50	2	1115650

Hat profile rail 35 x 7.5 mm to DIN EN 60715 (formerly DIN EN 50022).

Hat profile rail, unperforated



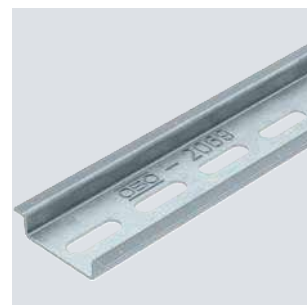
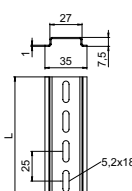
St GTP



Type	Version	Material thickness mm	Length mm	Bundle m	Item no.
2069 2M GTPL	Perforated	1	2000	50	1115669

Hat profile rail 35 x 7.5 mm to DIN EN 60715 (formerly DIN EN 50022).

Hat profile rail, perforated



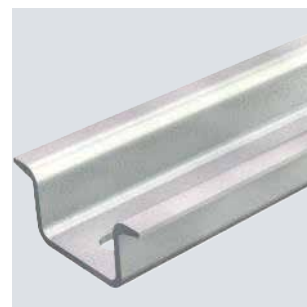
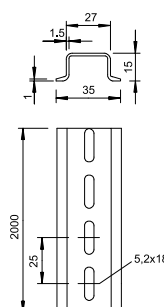
St GTP



Type	Version	Material thickness mm	Length mm	Bundle m	Item no.
2069 15 1.5 GTPL	Perforated	1.5	2000	20	1115456

Hat profile rail 35 x 15 mm similar to DIN EN 60715 (formerly DIN EN 50022), but with material thickness 1.5 mm.

Hat profile rail, perforated



Support rails

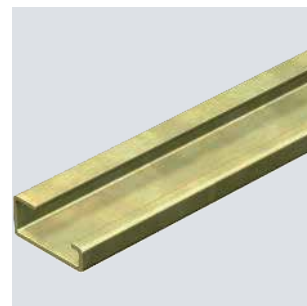
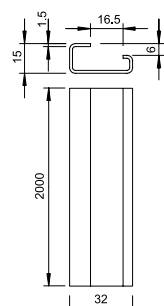
St GTP



Type	Version	Material thickness mm	Length mm	Bundle m	Item no.
2064 GTP 2M	Unperforated	1.5	2000	20	1115057

G rail G32 to DIN EN 60715 (previously DIN EN 50035).

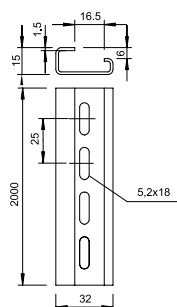
Support rail, unperforated



Support rails

Support rail, perforated

St GTP



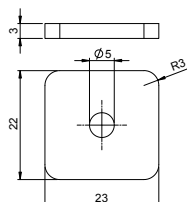
Type	Version	Material thickness mm	Length mm	Bundle m	Item no.
2064 GTPL 2M	Perforated	1.5	2000	20	1115065

G rail G32 to DIN EN 60715 (previously DIN EN 50035).

Washers

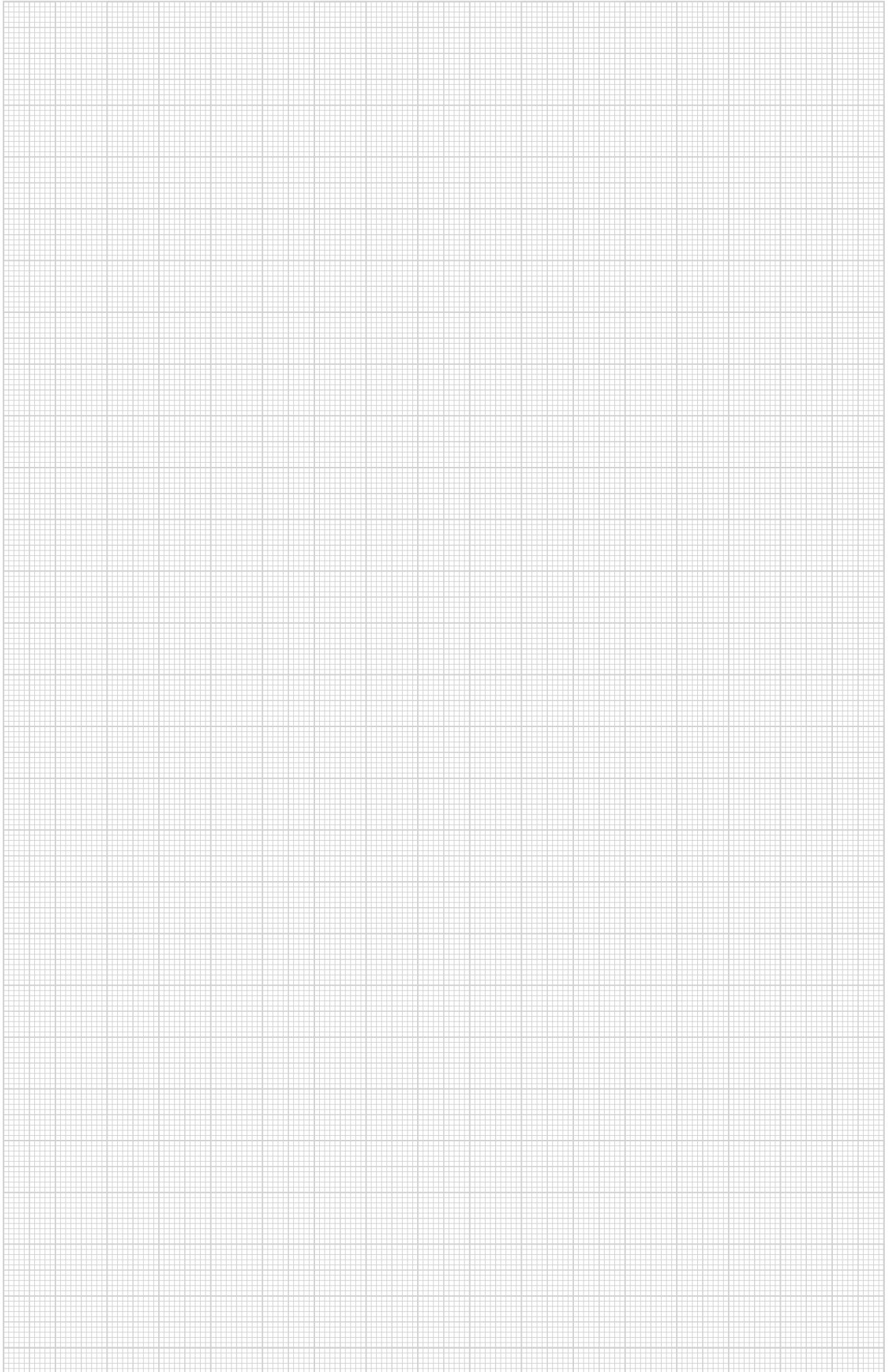
Washer

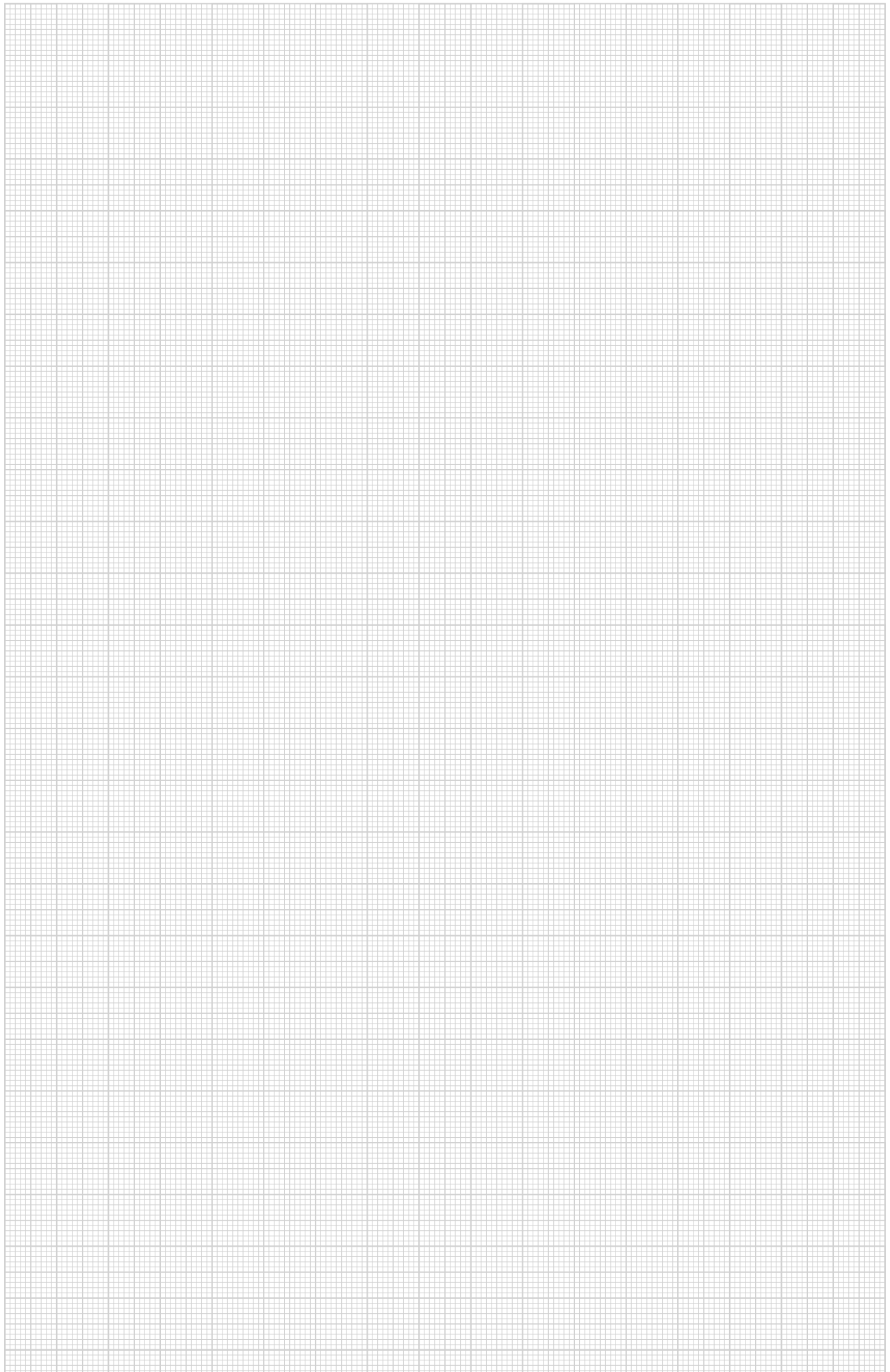
PVC

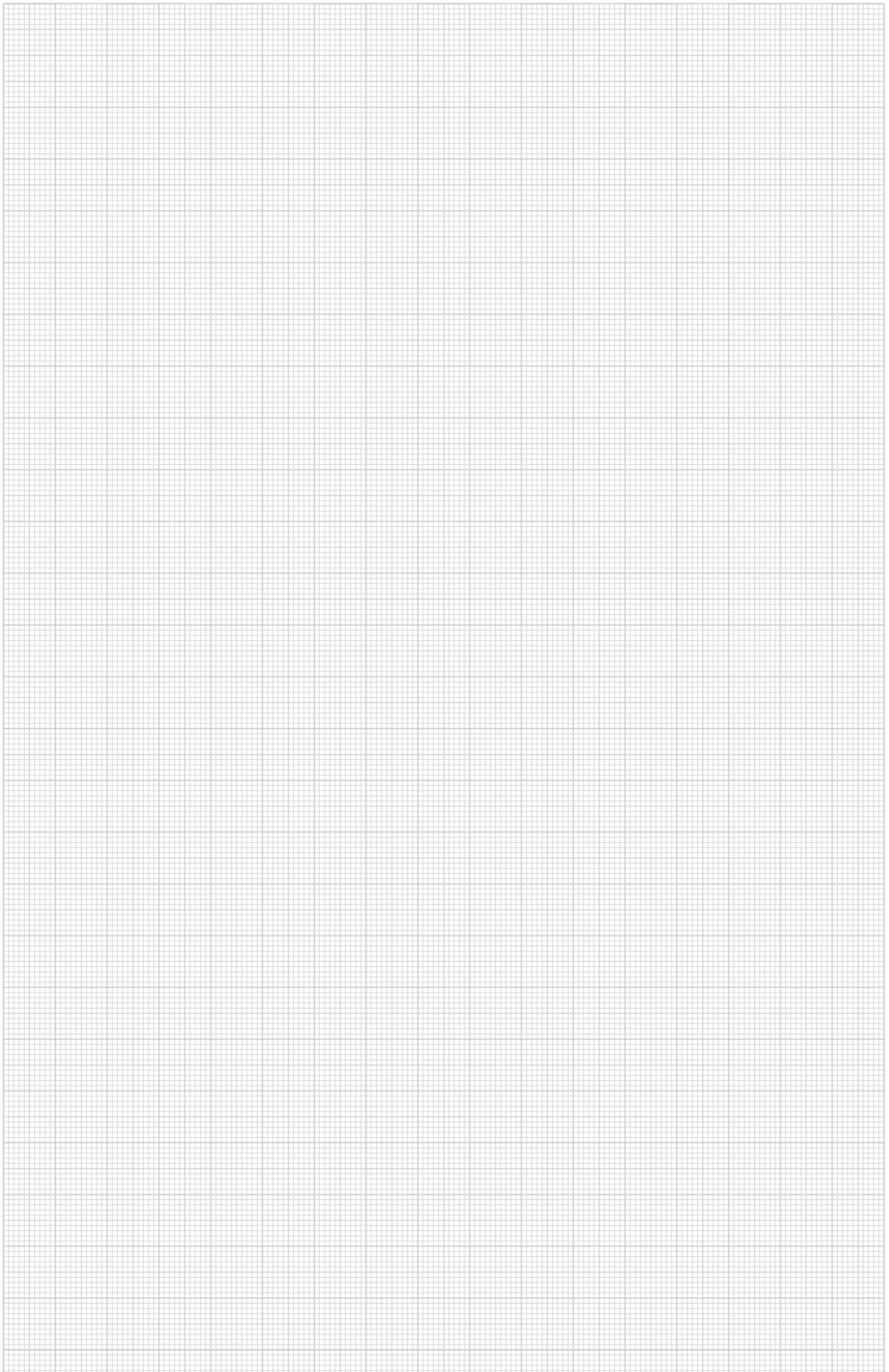


Type	Colour	Dim. h mm	Min. order- ing quantity Piece	Item no.
ULS	Grey	3	100	6178548

Washer as compensation for different heights.







OBO Bettermann Holding GmbH & Co. KG
Hüingser Ring 52
58710 Menden
GERMANY

Customer Service Germany
Tel. +49 (0)2373 89-2000
info@obo.de

www.obo-bettermann.com

© OBO Bettermann 04/2025 EN